

## Table des matières

<b>1</b>	<b>Branching diagrams CUSDEC .....</b>	<b>2</b>
1.1	Page 1.....	3
1.1.1	Page 1: CH801A, 807A.....	3
1.1.2	Page 1: CH802A.....	4
1.1.3	Page 1: CH803A.....	5
1.1.4	Page 1: CH804A.....	6
1.1.5	Page 1: CH804C.....	7
1.1.6	Page 1: CH805A.....	8
1.1.7	Page 1: CH805C.....	9
1.1.8	Page 1: CH806A.....	10
1.1.9	Page 1: CH808C.....	11
1.2	Page 2.....	12
1.2.1	Page 2: CH801A, 802A, 803A, 804A, 804C, 805A, 805C, 807A, 808C.....	12
1.2.2	Page 2: CH806A.....	13
1.3	Page 3+4: pour tous les messages selon chiffre 1 .....	14
1.4	Page 5.....	15
1.4.1	Page 5: CH801A.....	15
1.4.2	Page 5: CH802A.....	16
1.4.3	Page 5: CH803A.....	17
1.4.4	Page 5: CH804A, 807A, 808C.....	18
1.4.5	Page 5: CH804C, 805C.....	19
1.4.6	Page 5: CH805A.....	20
1.4.7	Page 5: CH806A.....	21
1.5	Page 6.....	22
1.5.1	Page 6: CH801A, 802A.....	22
1.5.2	Page 6: CH803A, 804A, 805A, 807A, 808C.....	23
1.5.3	Page 6: CH804C, 805C, 806A.....	24
1.6	Page 7.....	25
1.6.1	Page 7: CH801A, 802A, 804A, 807A, 808C.....	25
1.6.2	Page 7: CH803A, 804C, 805A, 805C, 806A.....	26
<b>2</b>	<b>Branching diagrams CUSRES .....</b>	<b>27</b>
2.1	Page 1.....	28
2.1.1	Page 1: CH801B, 802B, 803B, 804B, 805B, 806B, 807B.....	28
2.1.2	Page 1: CH801C, 802C, 806C.....	29
2.1.3	Page 1: CH803C.....	30
2.1.4	Page 1: CH807C.....	31
2.2	Page 2: pour tous les messages selon chiffre 8 .....	32
2.3	Page 3: pour tous les messages selon chiffre 8 .....	33

# 1 Branching diagrams CUSDEC

CUSDEC
UN D.96B; 1

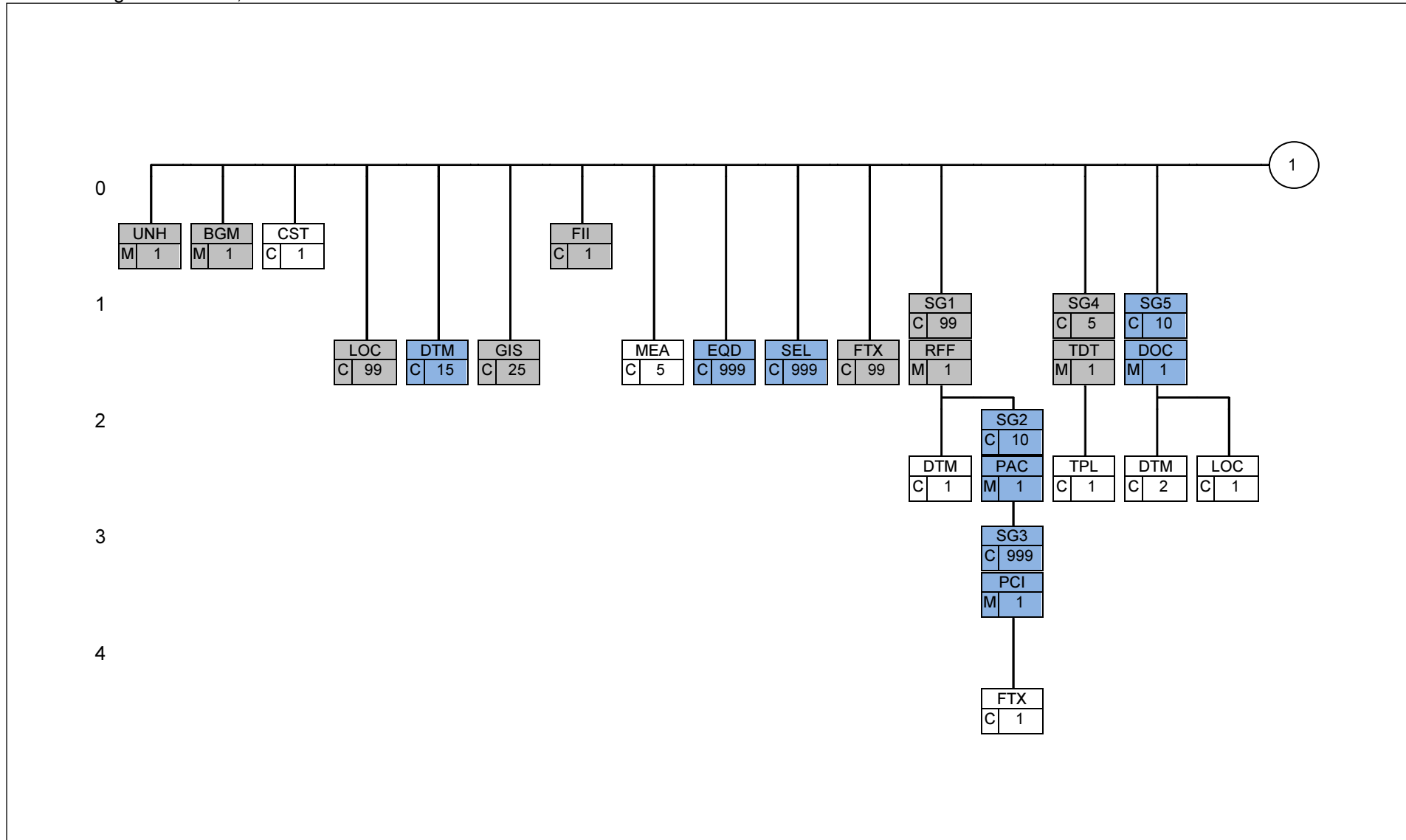
Valable pour les messages suivants:

CH801A	Annonce d'exportation
CH802A	Déclaration d'exportation
CH803A	Annonce de transit
CH804A	Demande de l'AAR par le destinataire agréé
CH805A	Annonce d'arrivée
CH806A	Remarques du déchargement
CH807A	Demande d'annulation

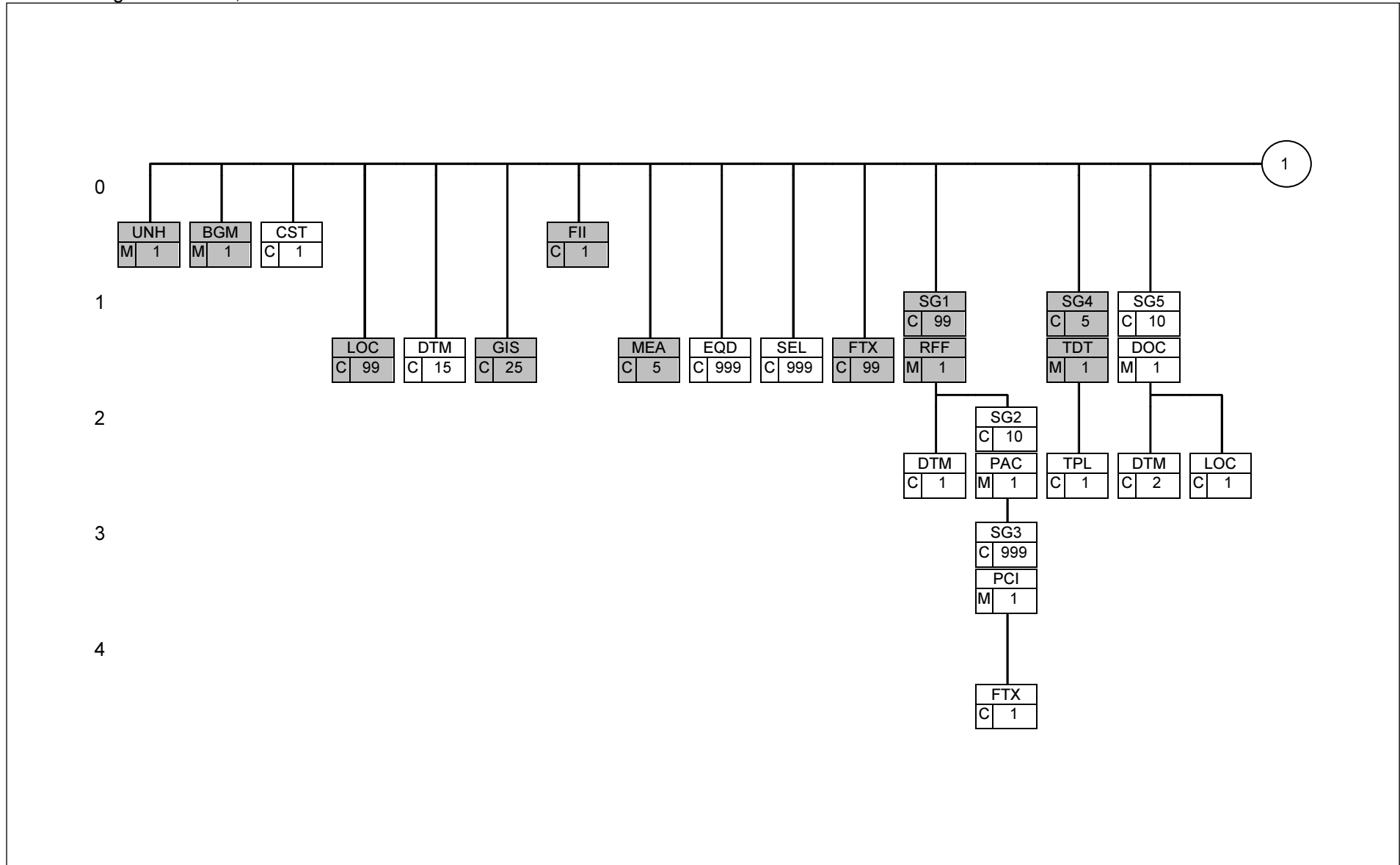
CH804C	Transmission de l'AAR au Da
CH805C	Autorisation de déchargement
CH808C	Annonce de statut

# 1.1 Page 1

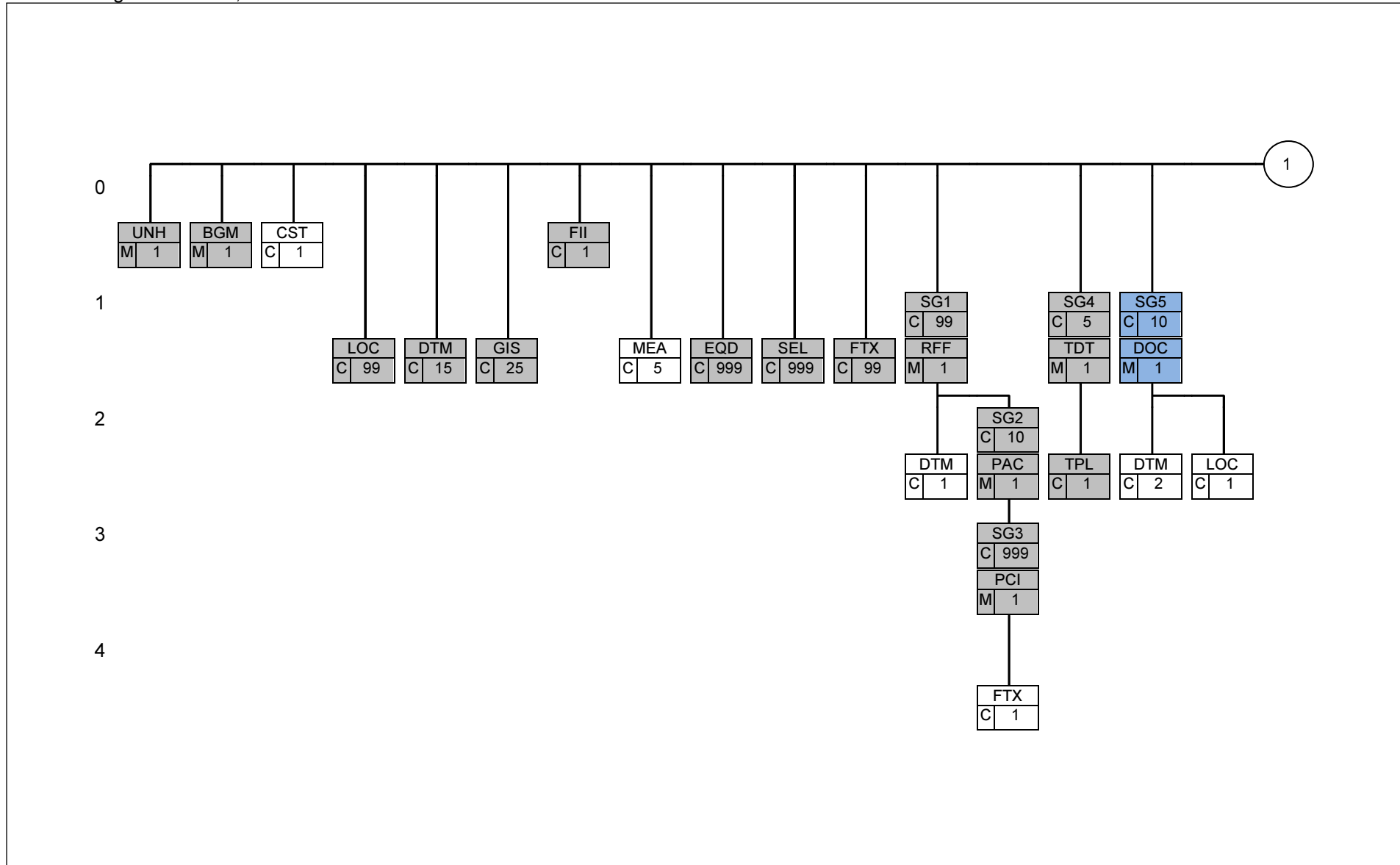
## 1.1.1 Page 1: CH801A, 807A



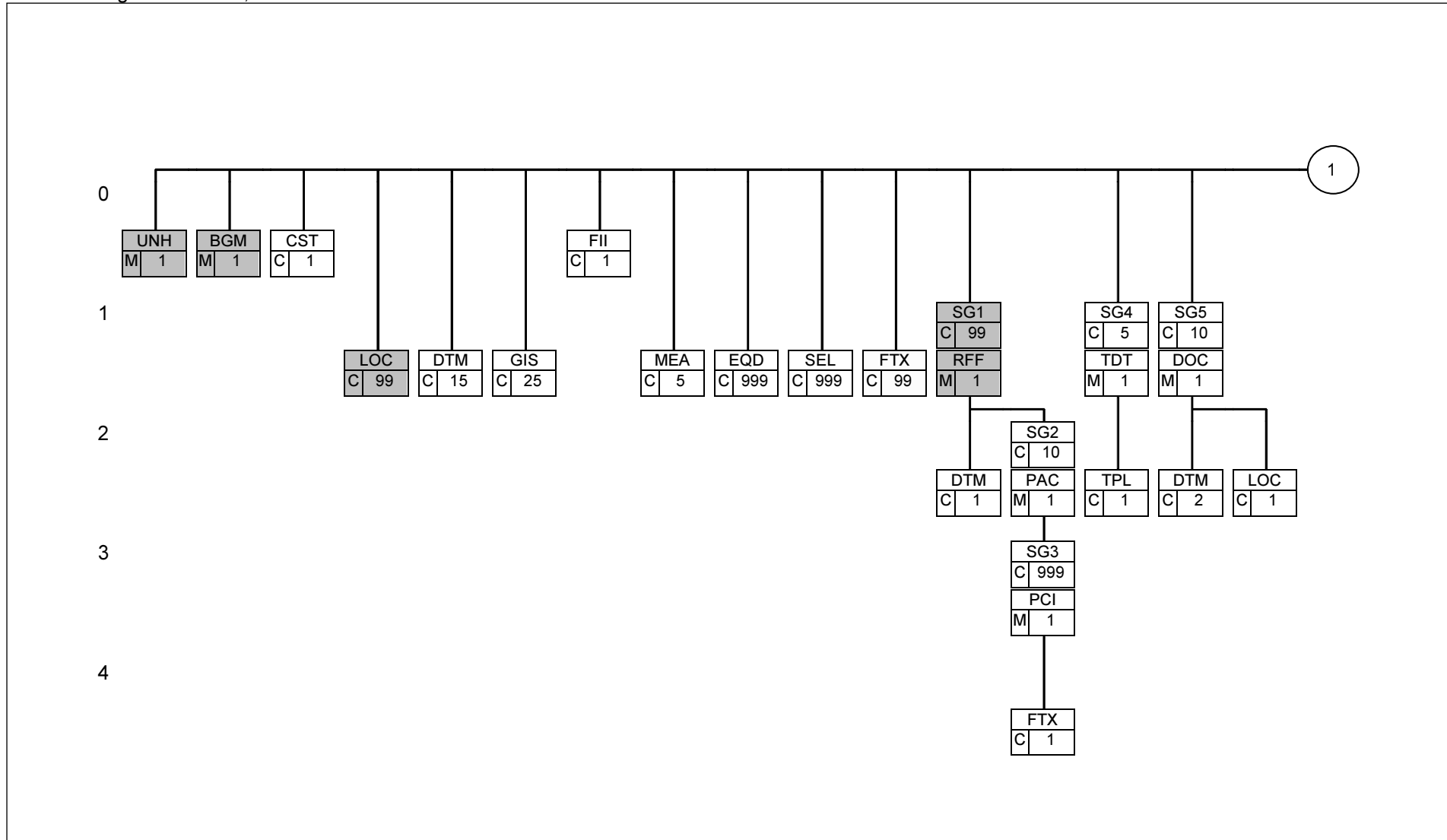
1.1.2 Page 1: CH802A,



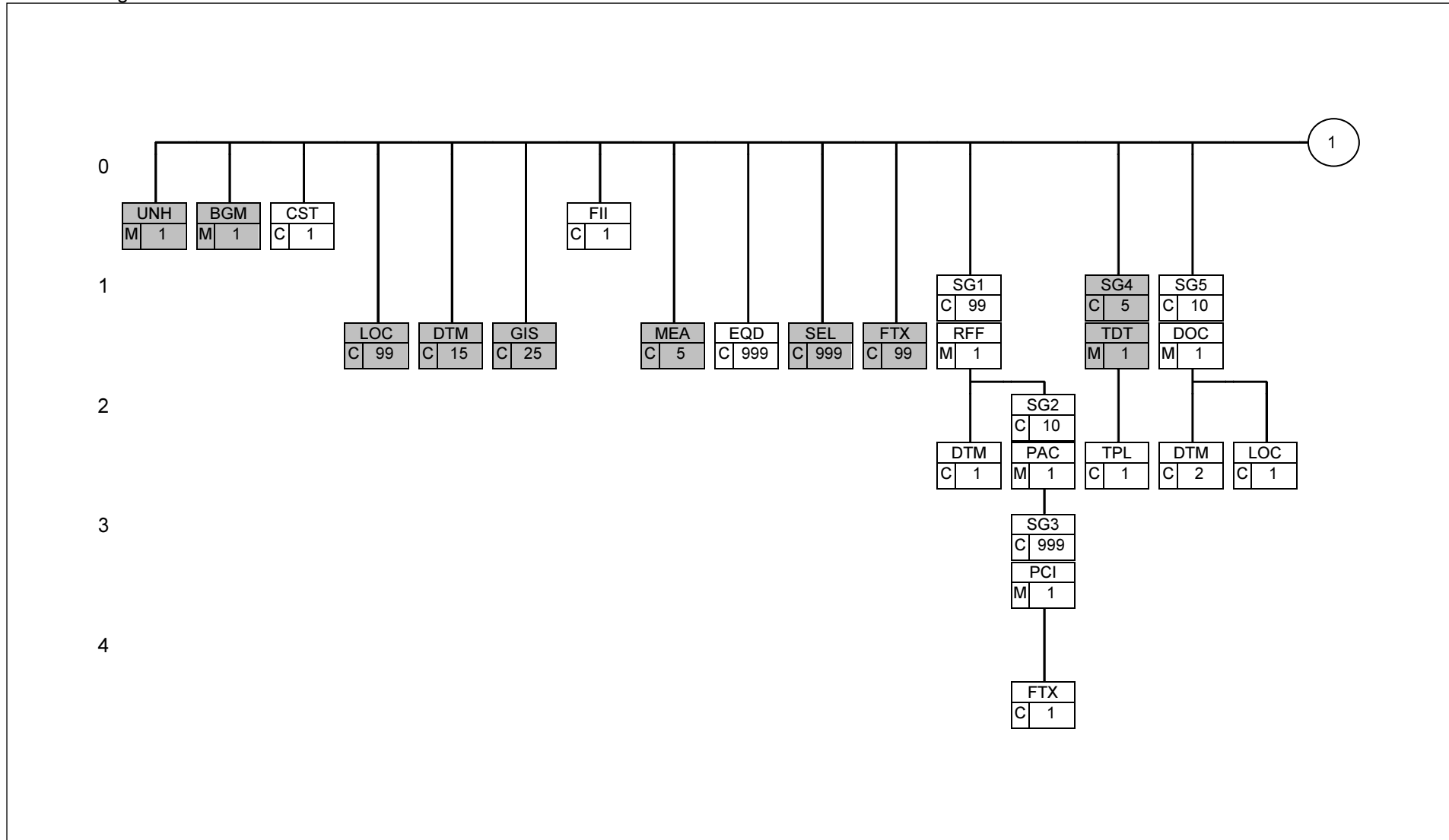
1.1.3 Page 1: CH803A,



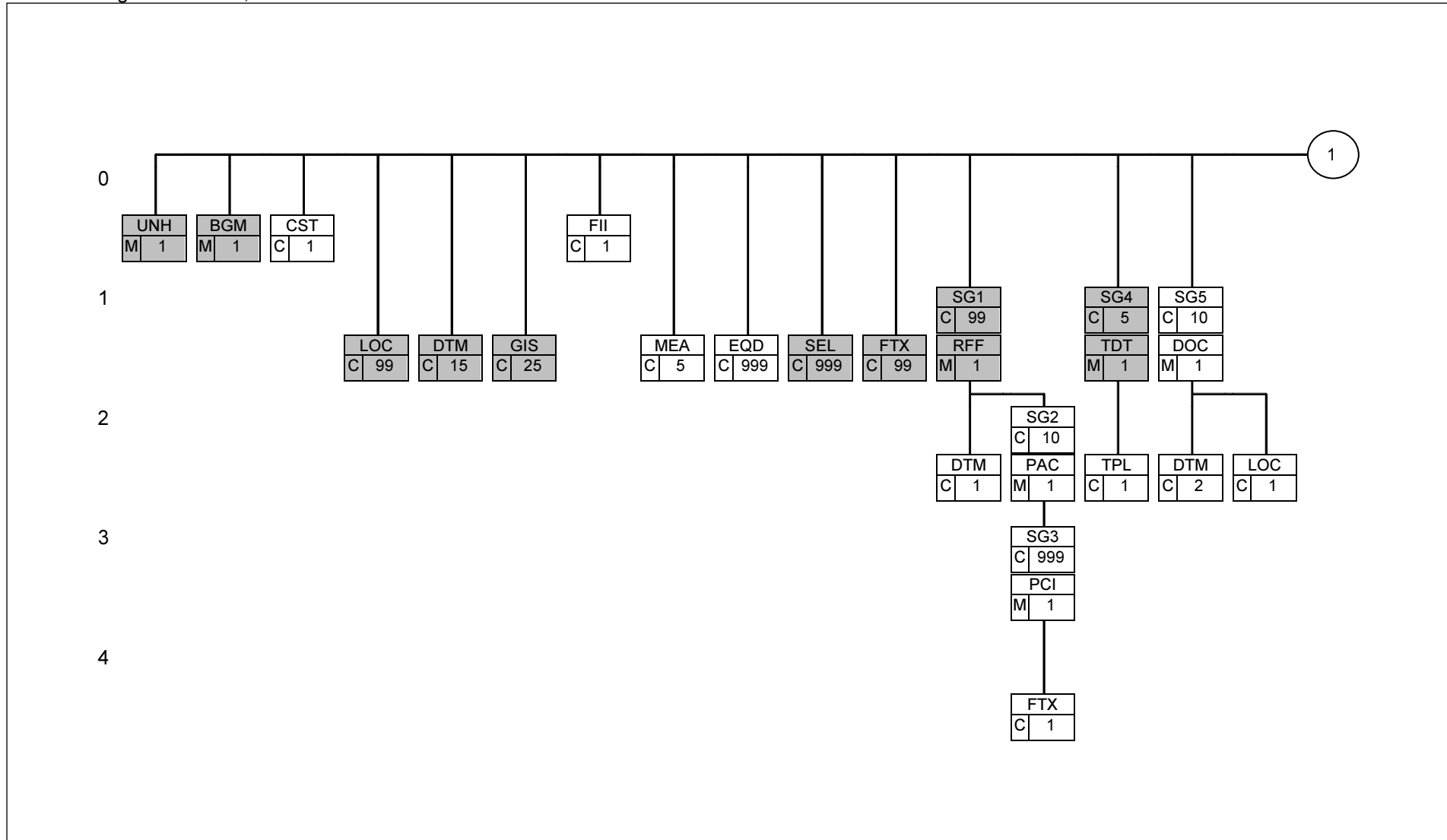
1.1.4 Page 1: CH804A,



1.1.5 Page 1: CH804C

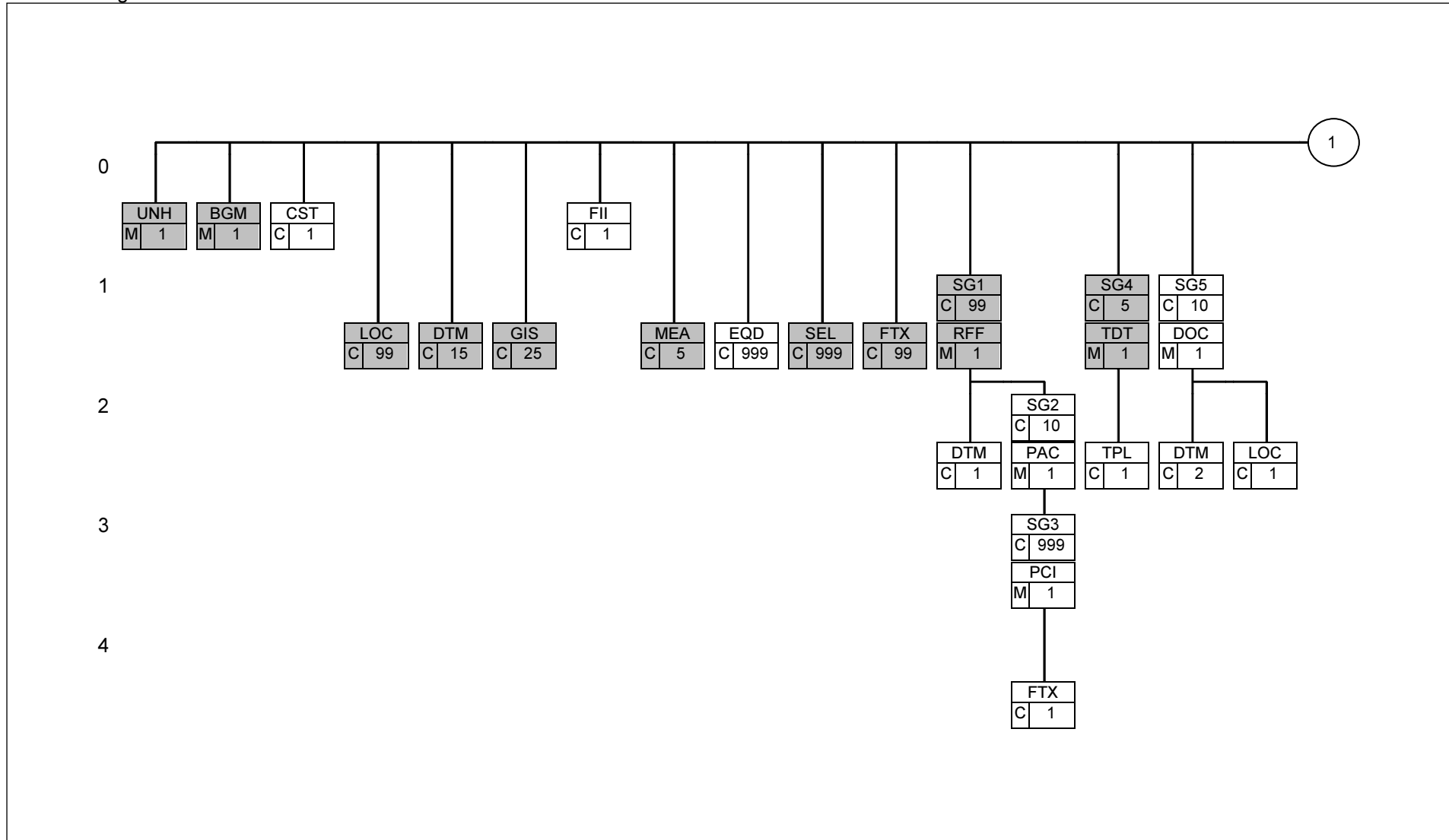


1.1.6 Page 1: CH805A,

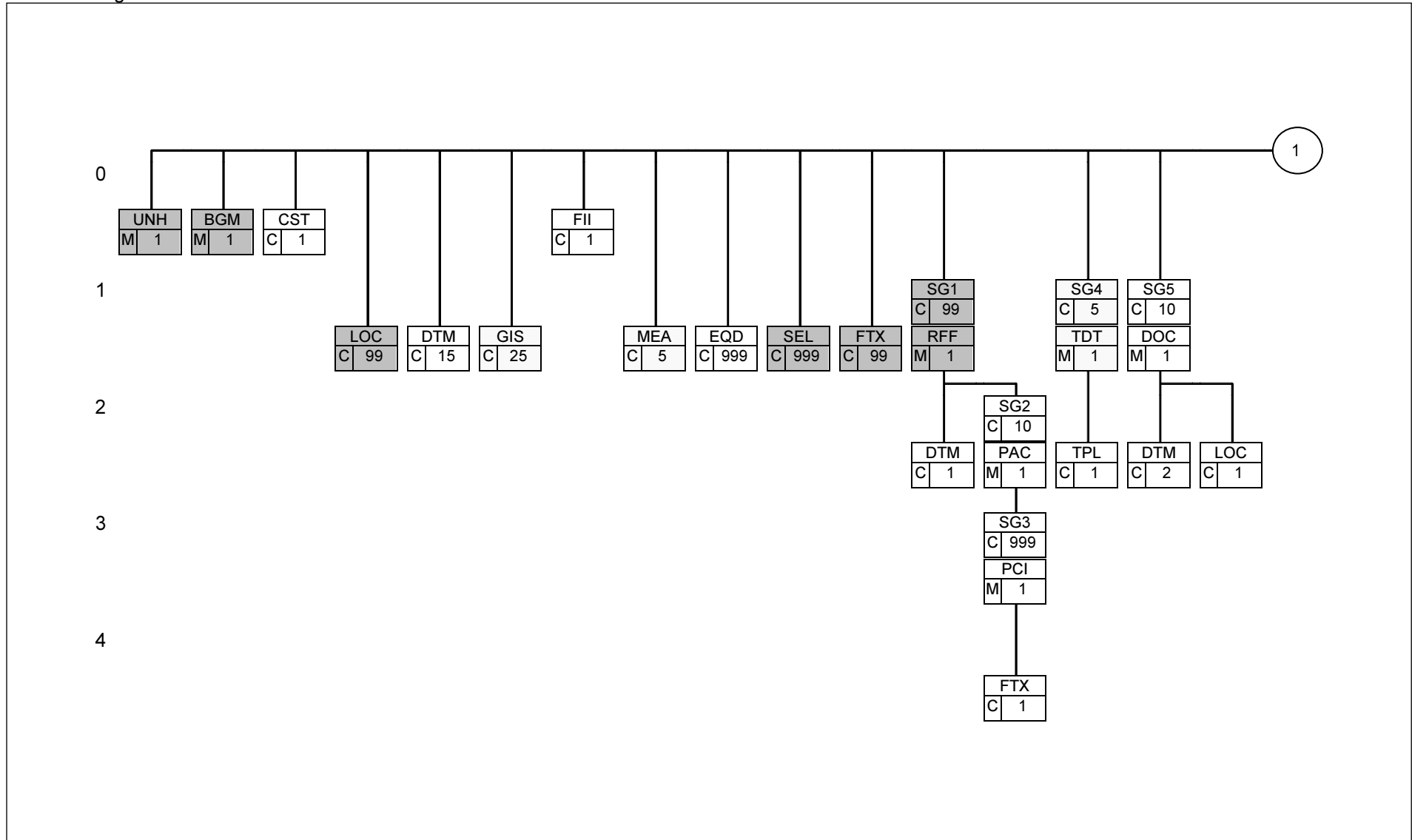




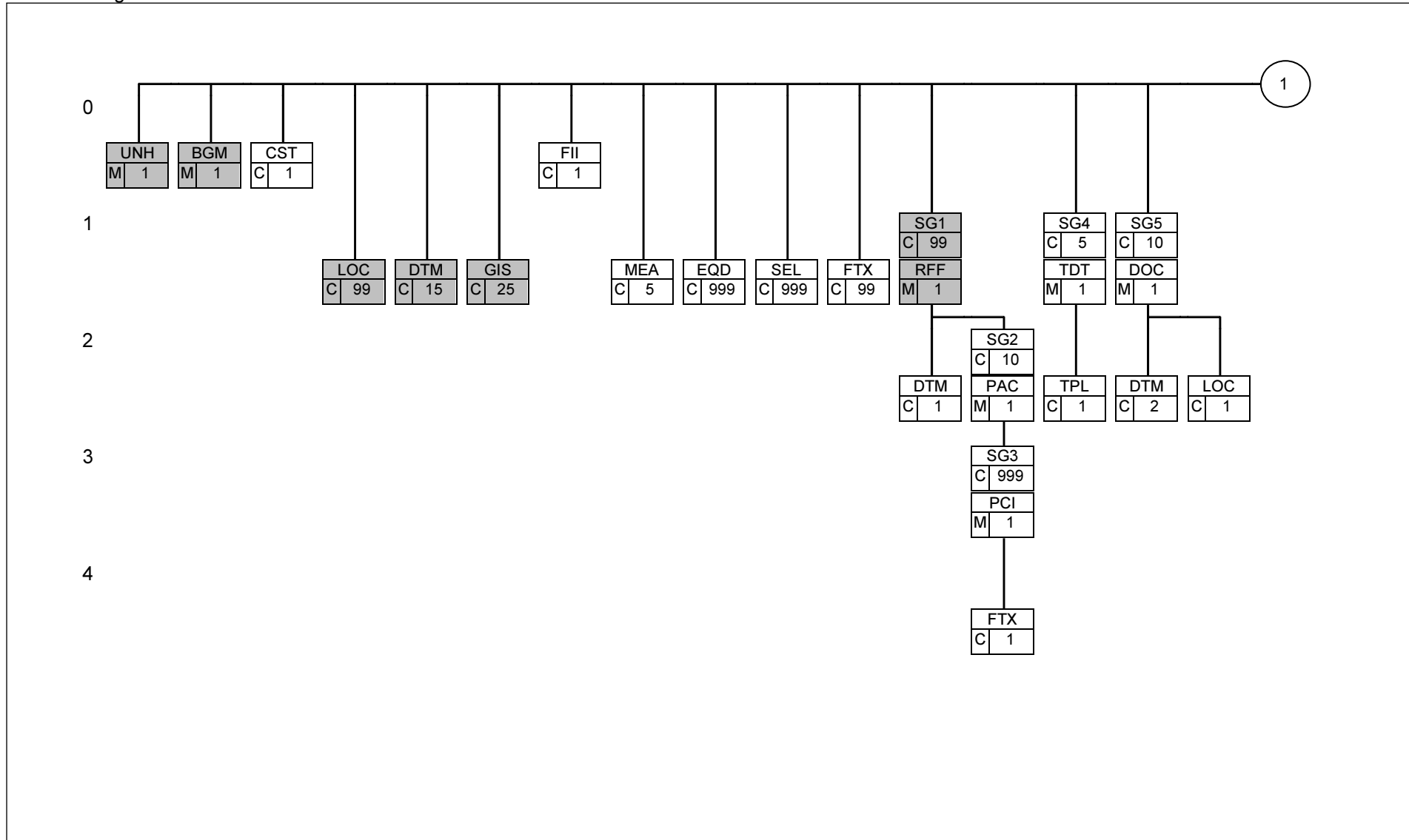
1.1.7 Page 1: CH805C



1.1.8 Page 1: CH806A

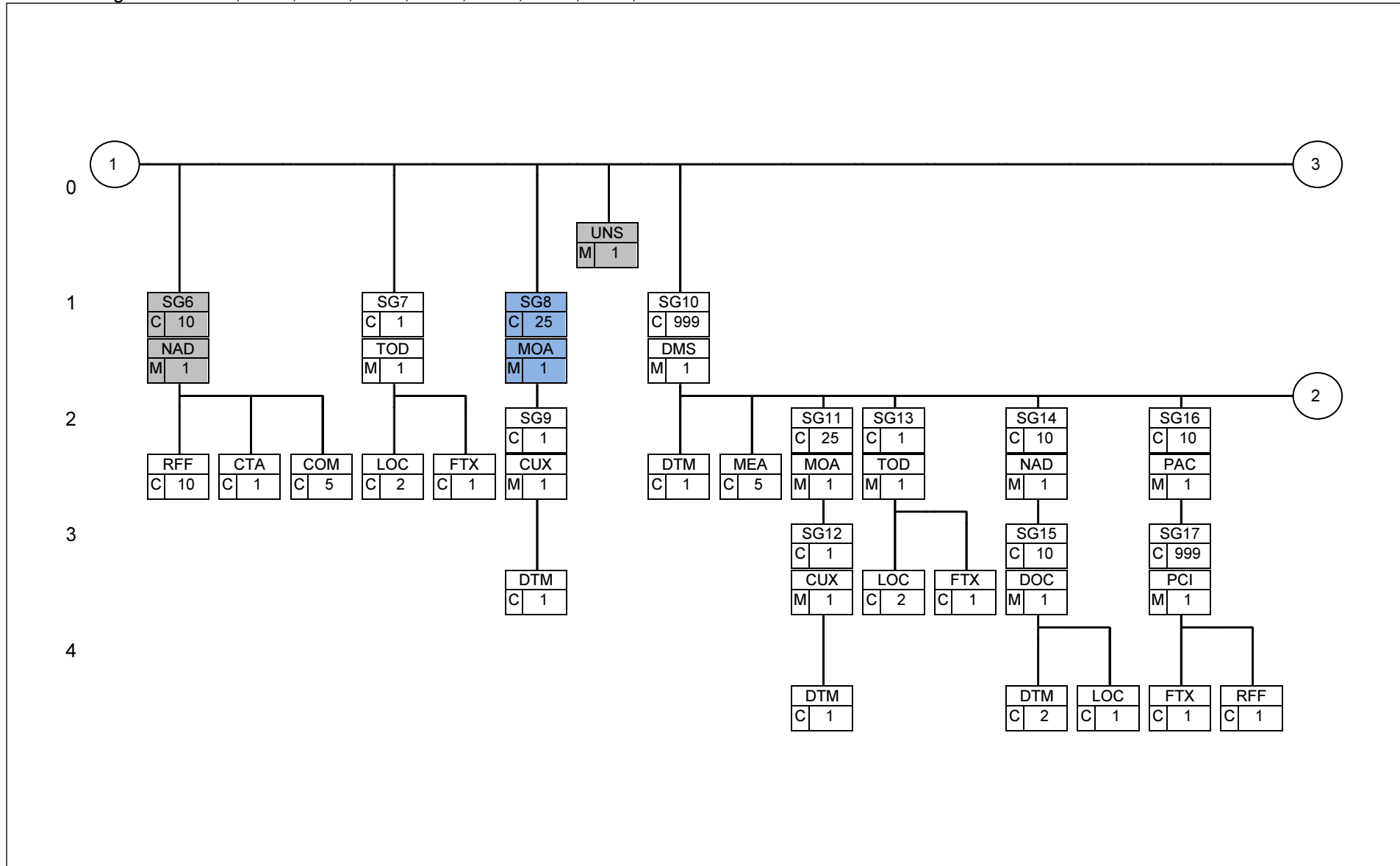


1.1.9 Page 1: CH808C

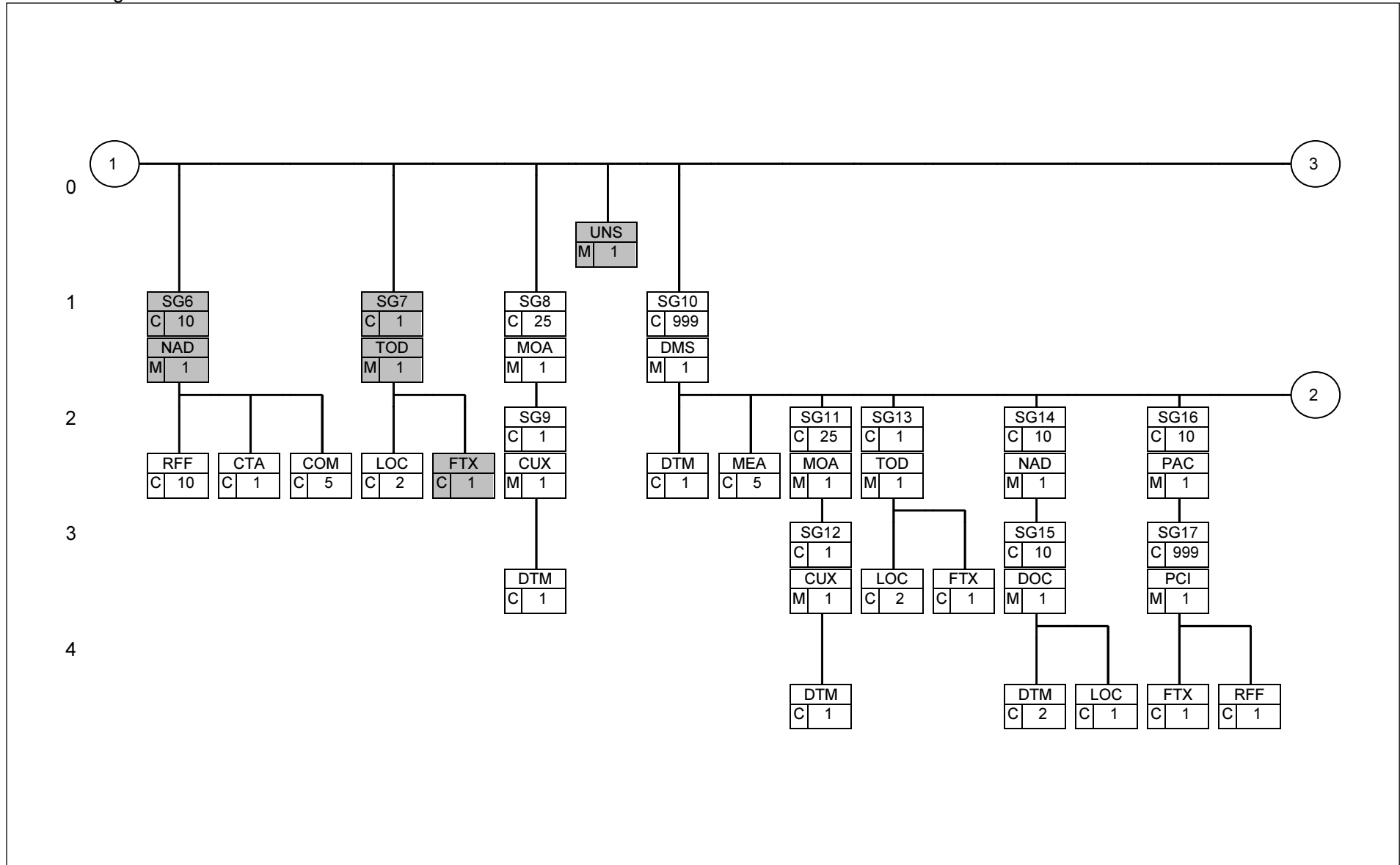


# 1.2 Page 2

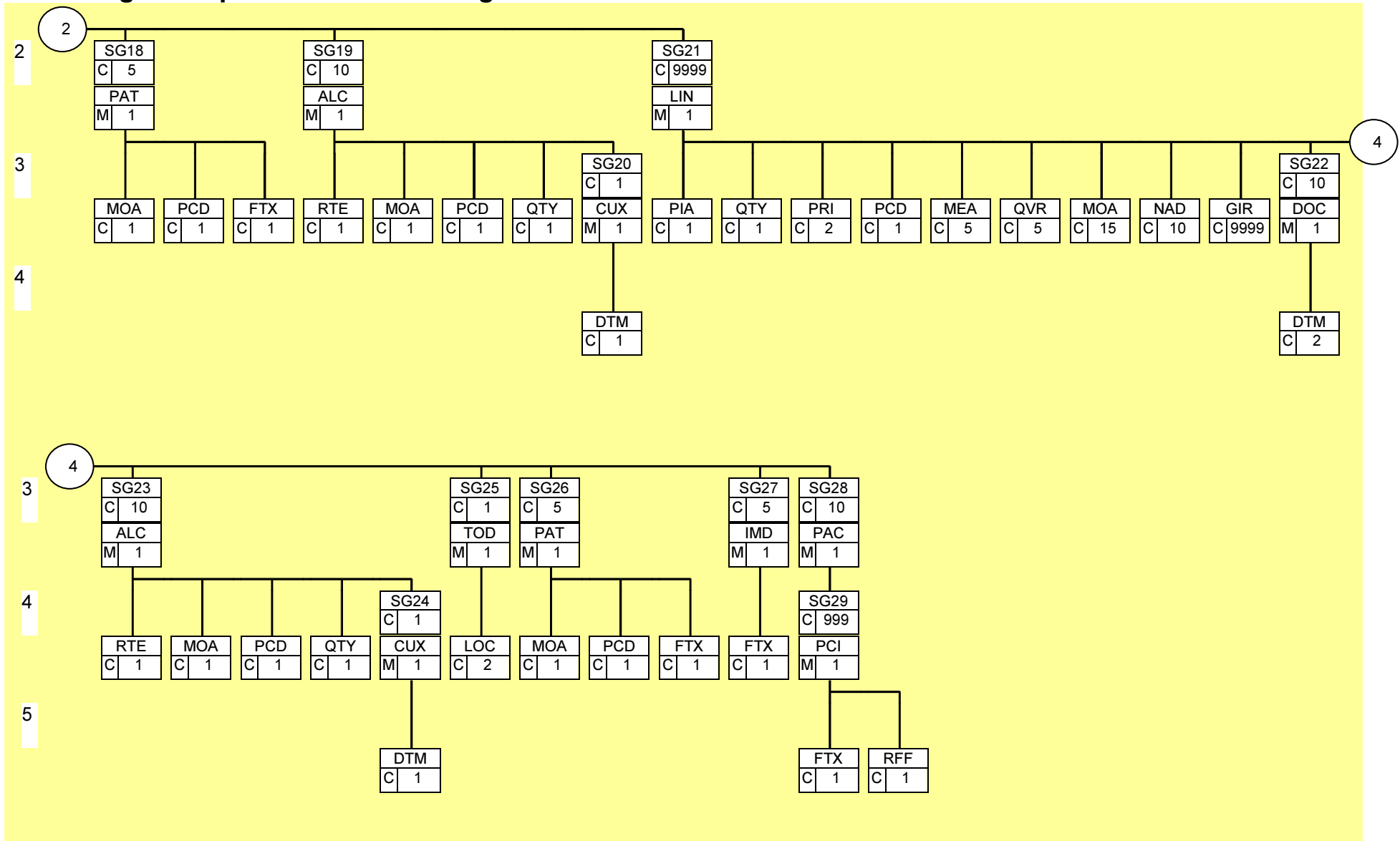
1.2.1 Page 2: CH801A, 802A, 803A, 804A, 804C, 805A, 805C, 807A, 808C



1.2.2 Page 2: CH806A

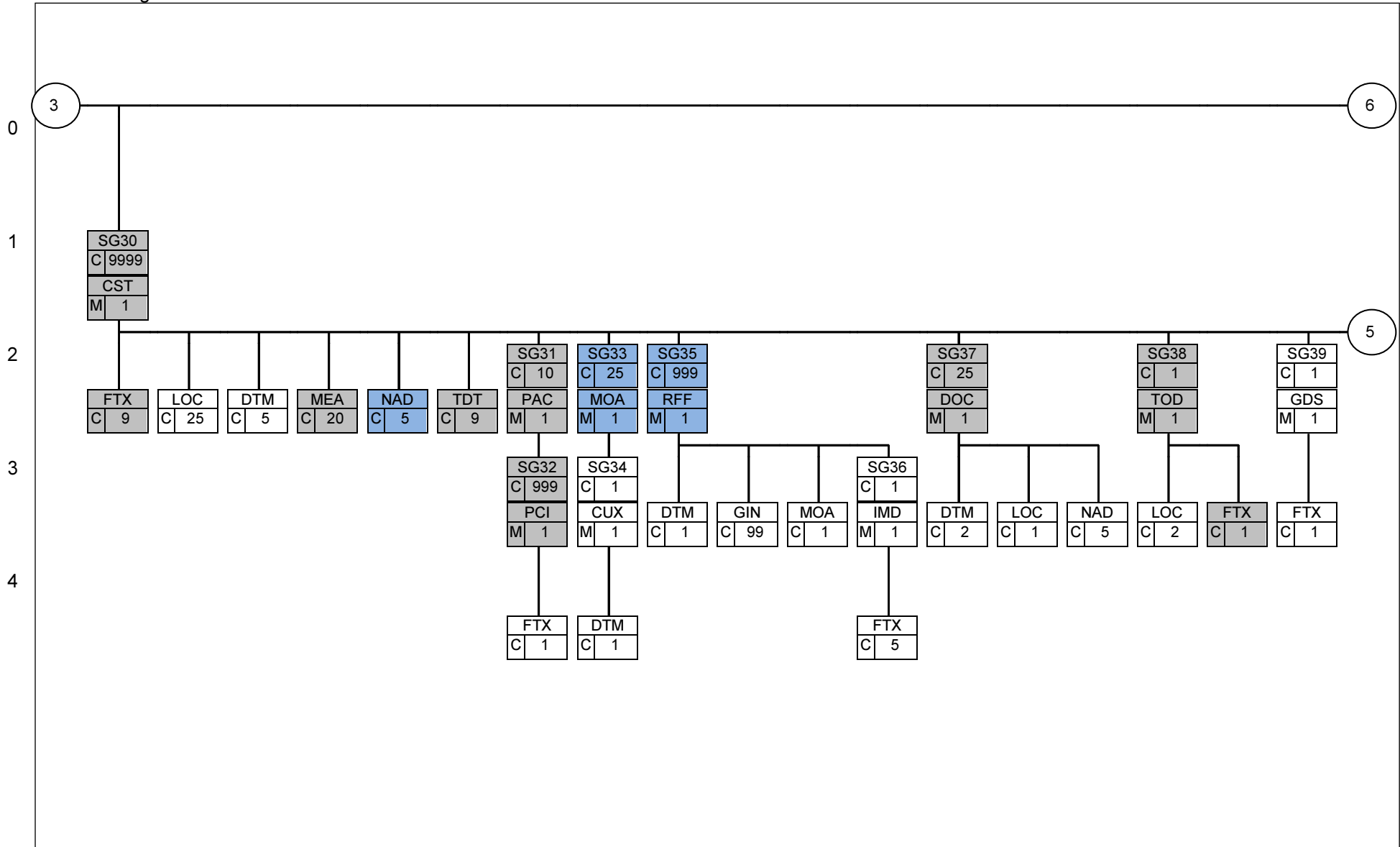


### 1.3 Page 3+4: pour tous les messages selon chiffre 1

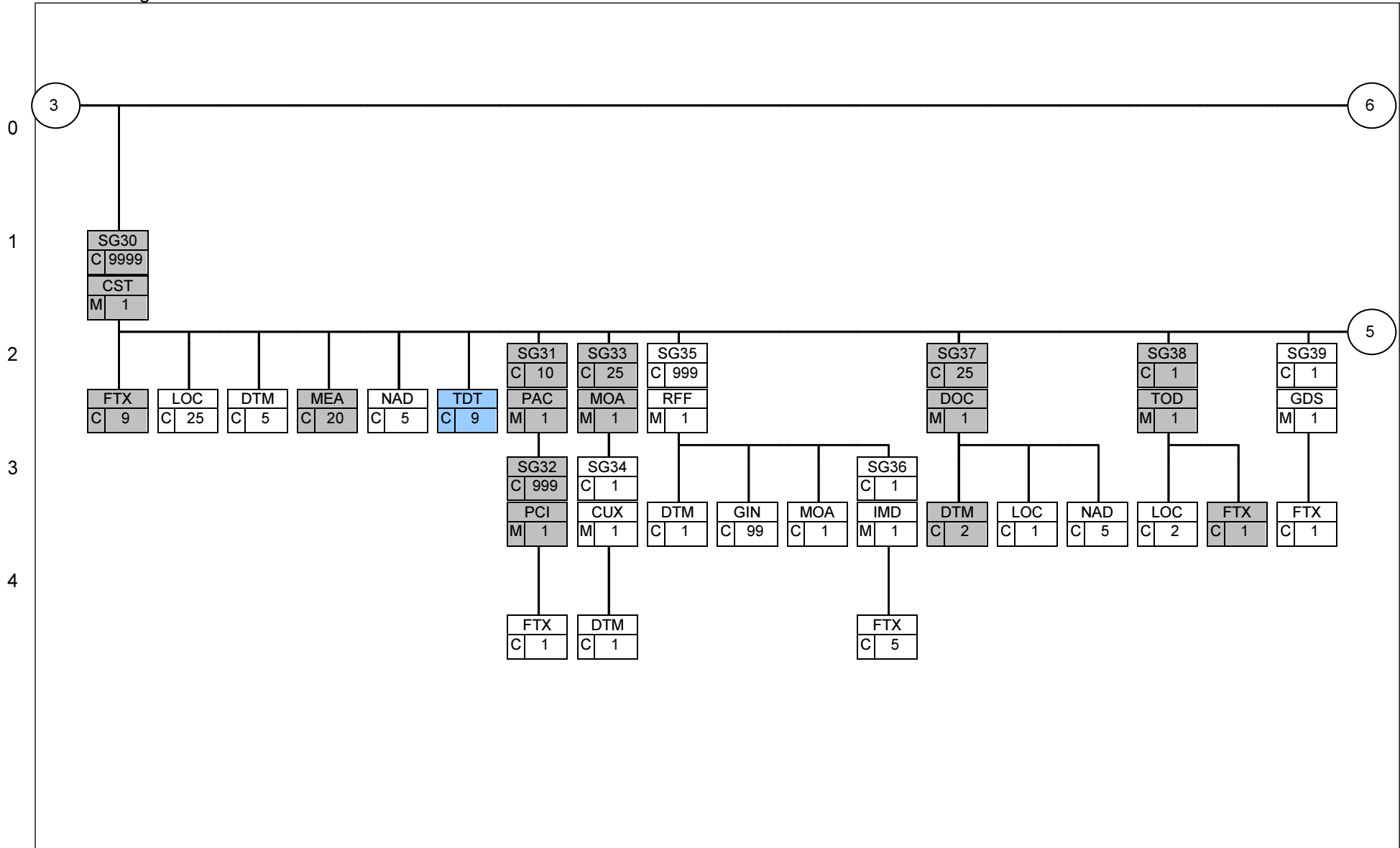


# 1.4 Page 5

## 1.4.1 Page5: CH801A

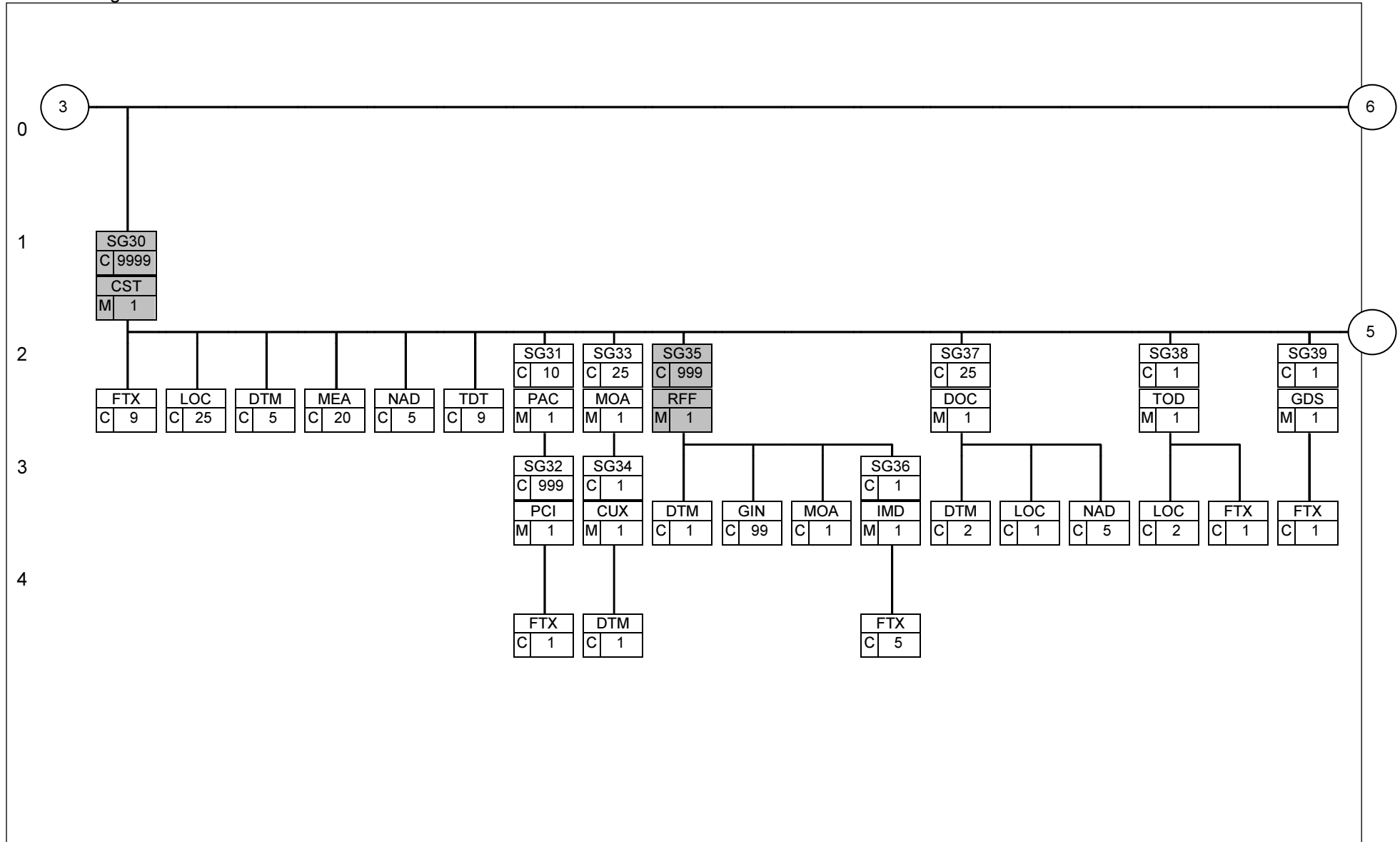


1.4.2 Page 5: CH802A

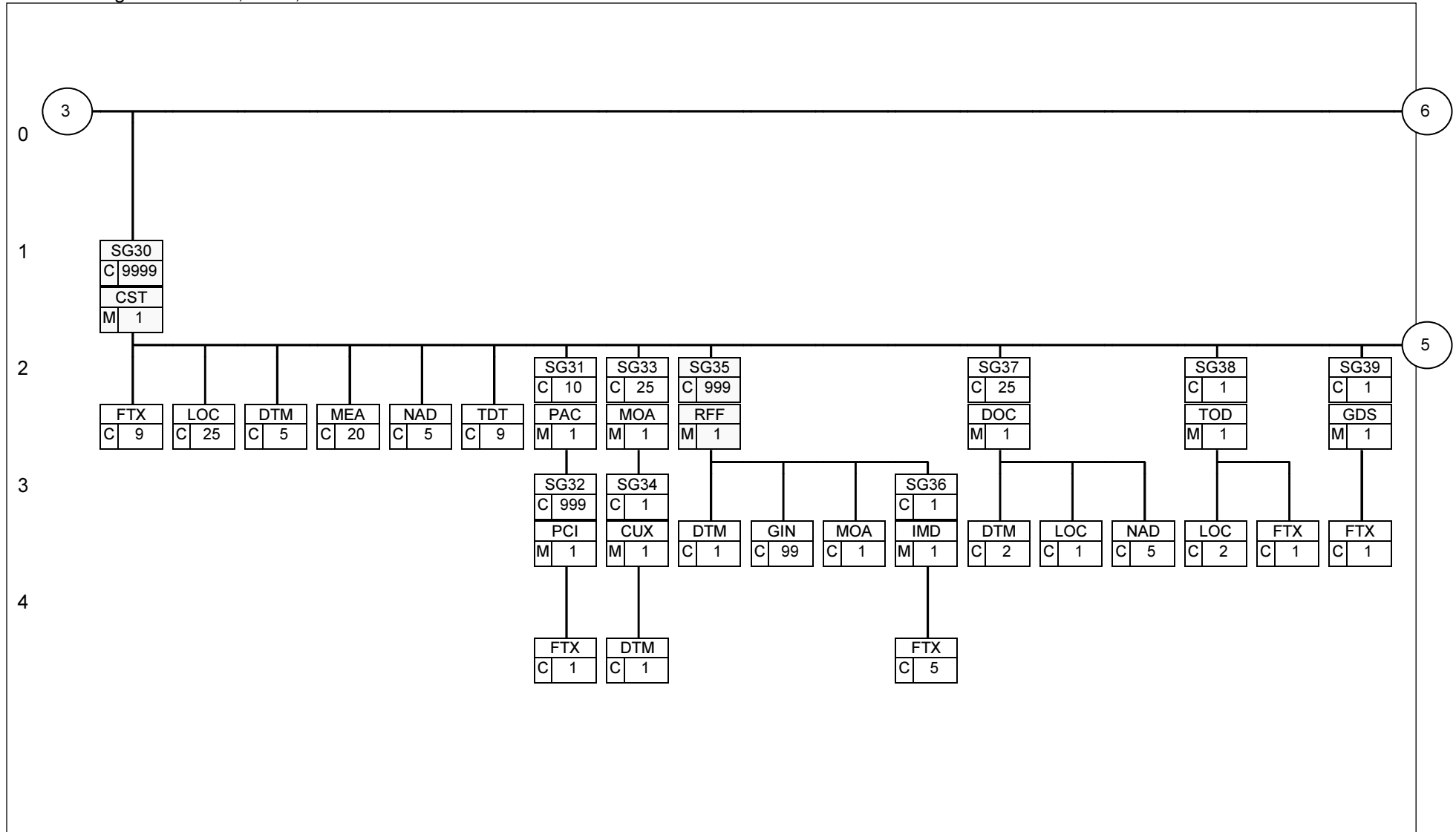




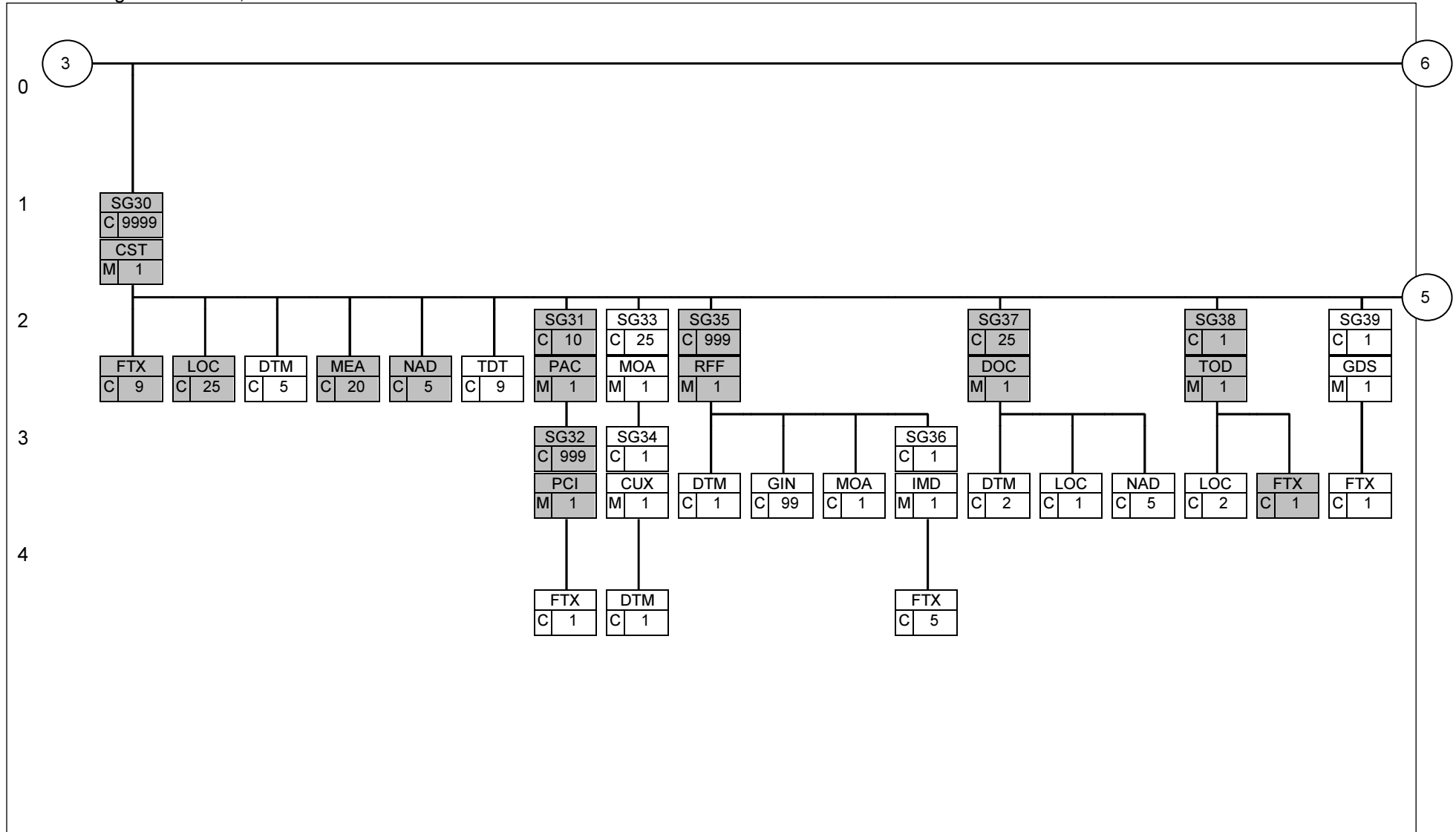
1.4.3 Page 5: CH803A



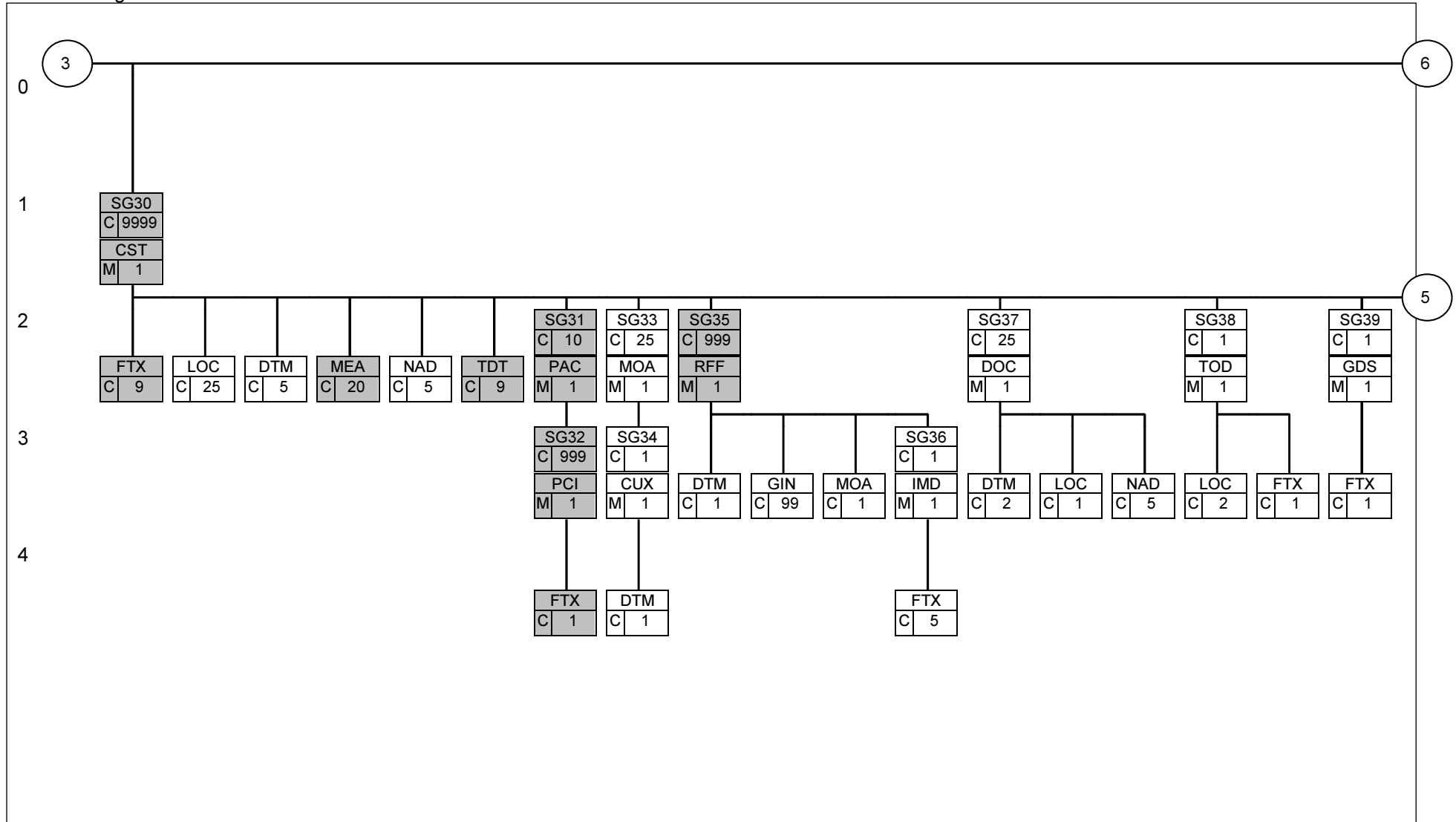
1.4.4 Page 5: CH804A, 807A, 808C



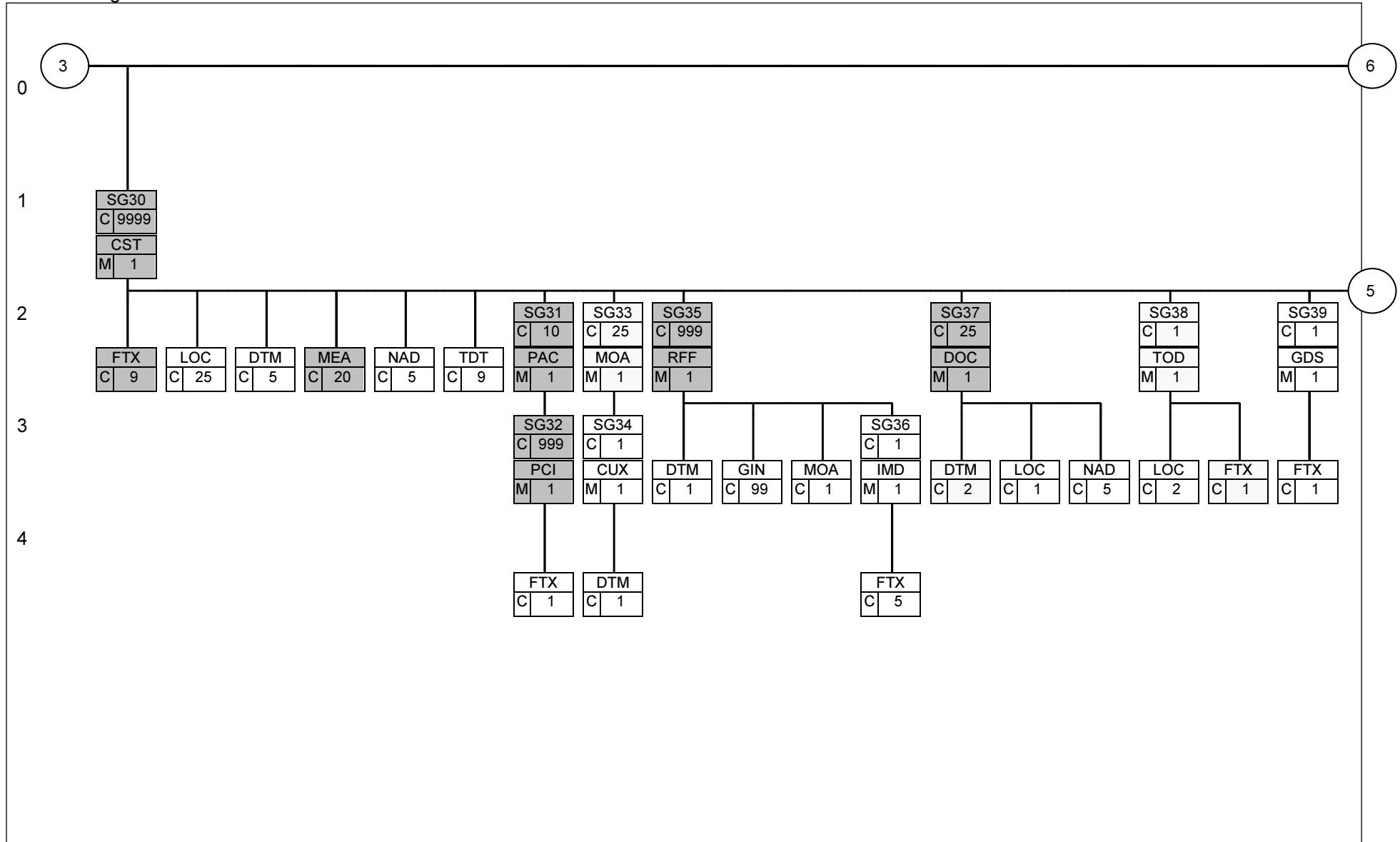
1.4.5 Page 5: CH804C, 805C



1.4.6 Page 5: CH805A

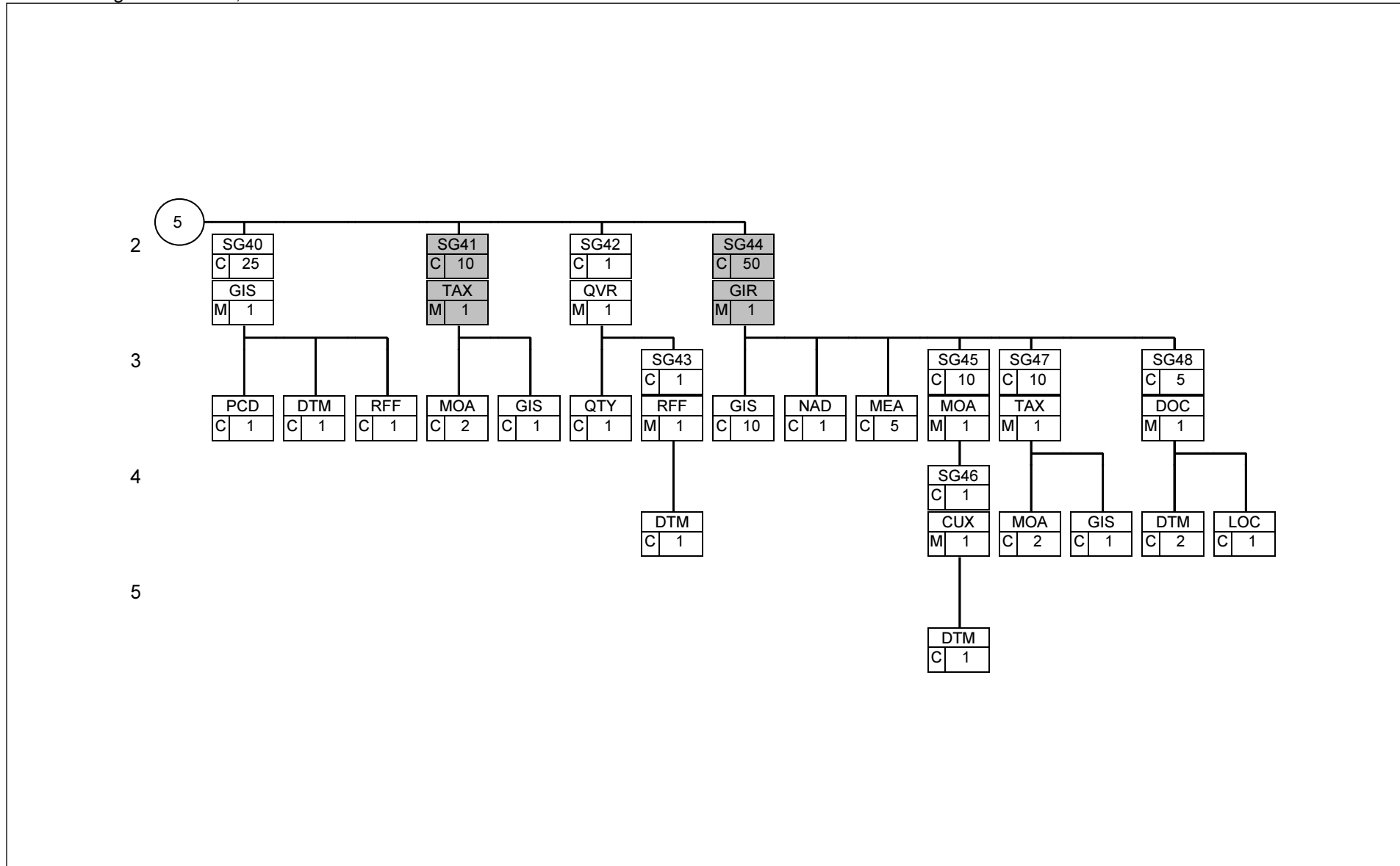


1.4.7 Page 5: CH806A

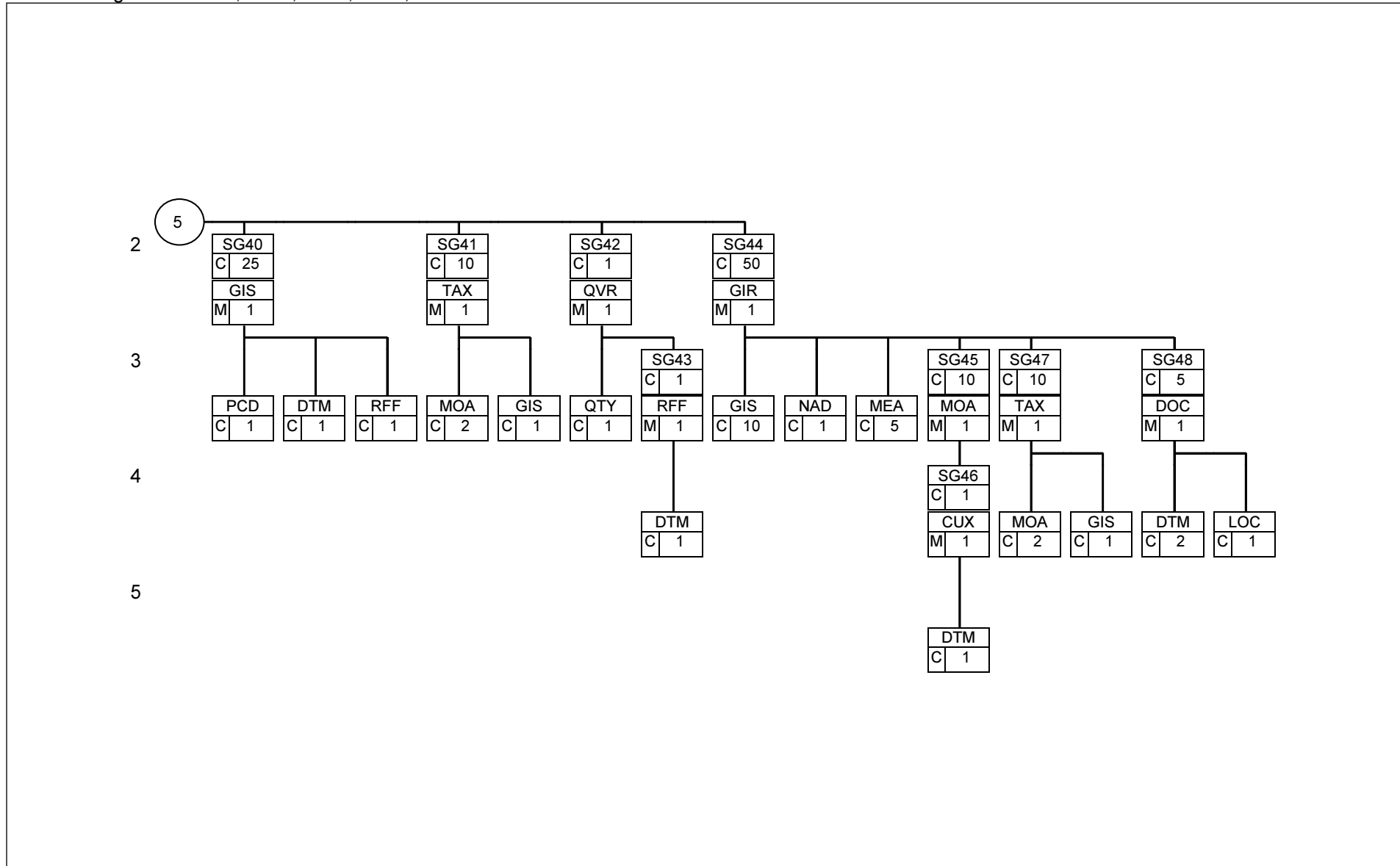


# 1.5 Page 6

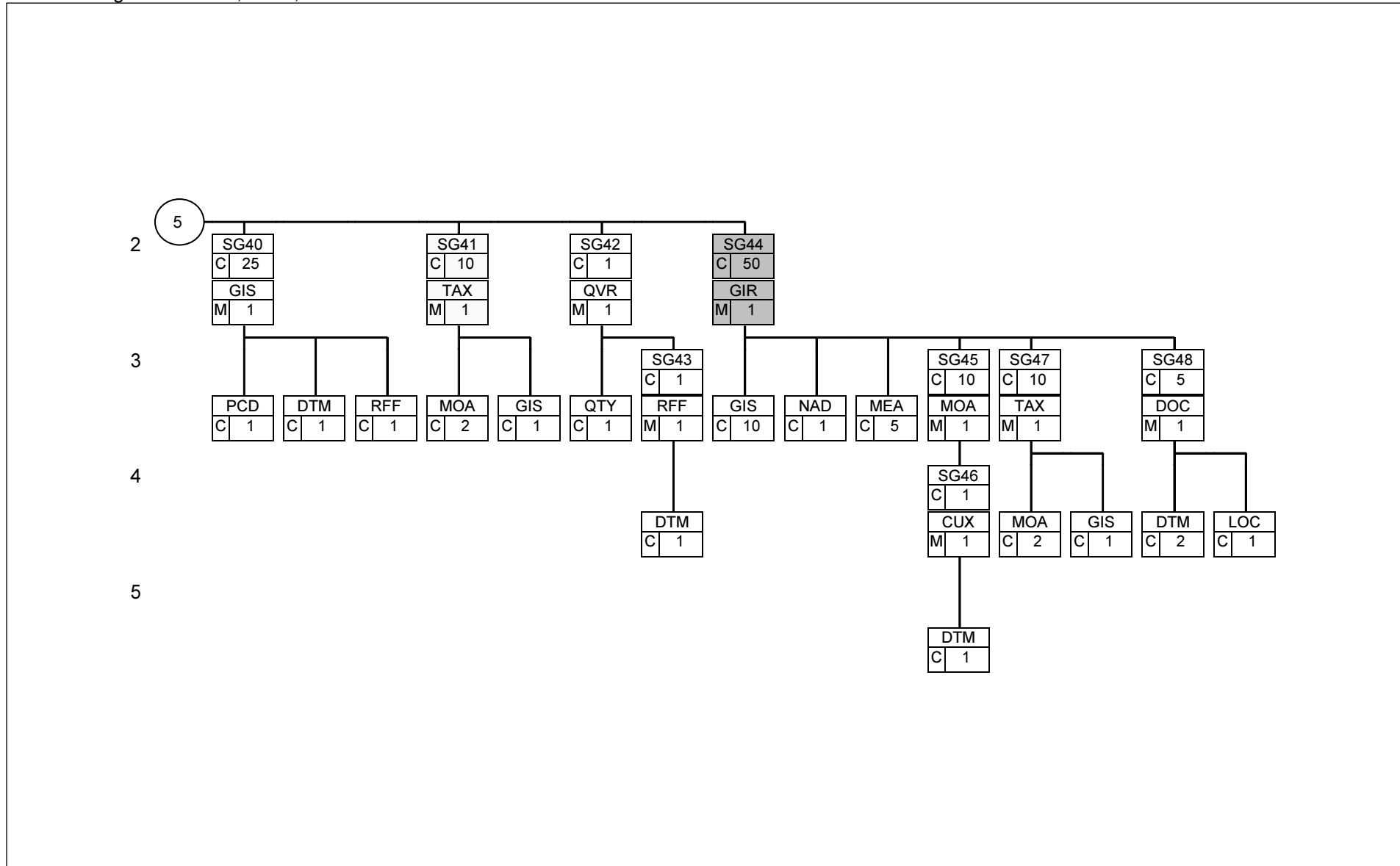
## 1.5.1 Page 6: CH801A, 802A



1.5.2 Page 6: CH803A, 804A, 805A, 807A, 808C



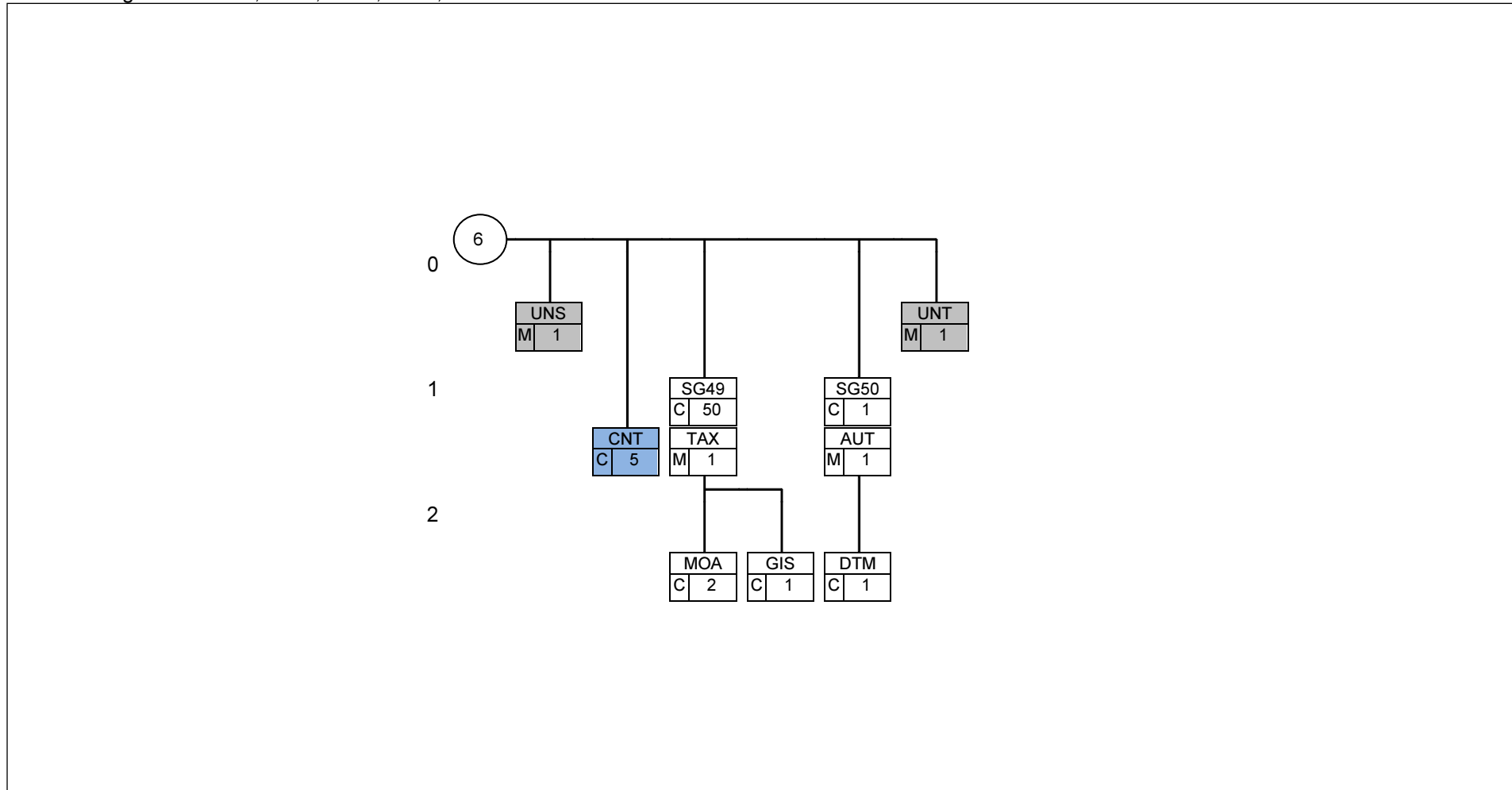
1.5.3 Page 6: CH804C, 805C, 806A



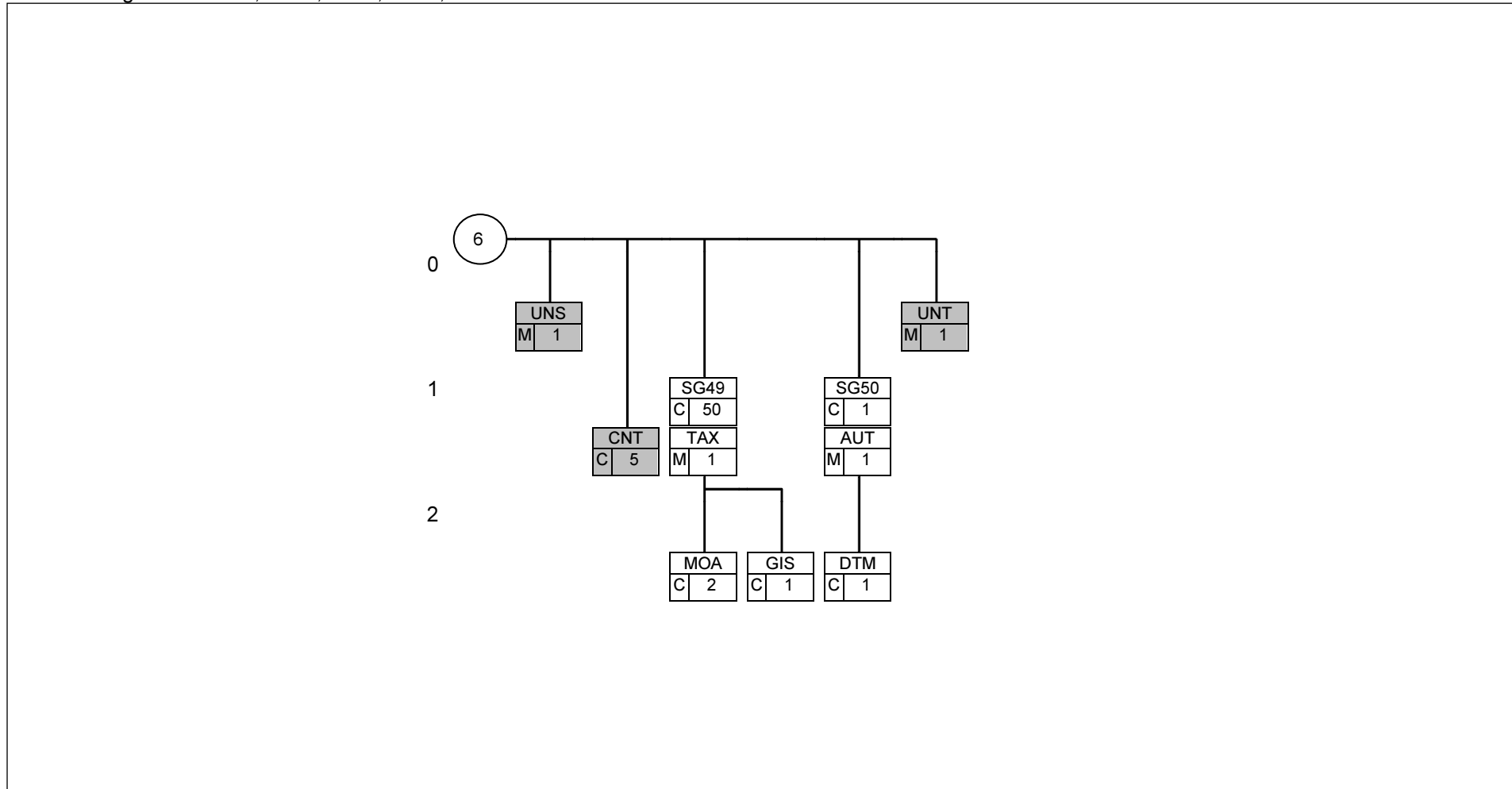


# 1.6 Page 7

## 1.6.1 Page 7: CH801A, 802A, 804A, 807A, 808C



1.6.2 Page 7: CH803A, 804C, 805A, 805C, 806A



## 2 Branching diagrams CUSRES

CUSRES
UN D.96B; 1

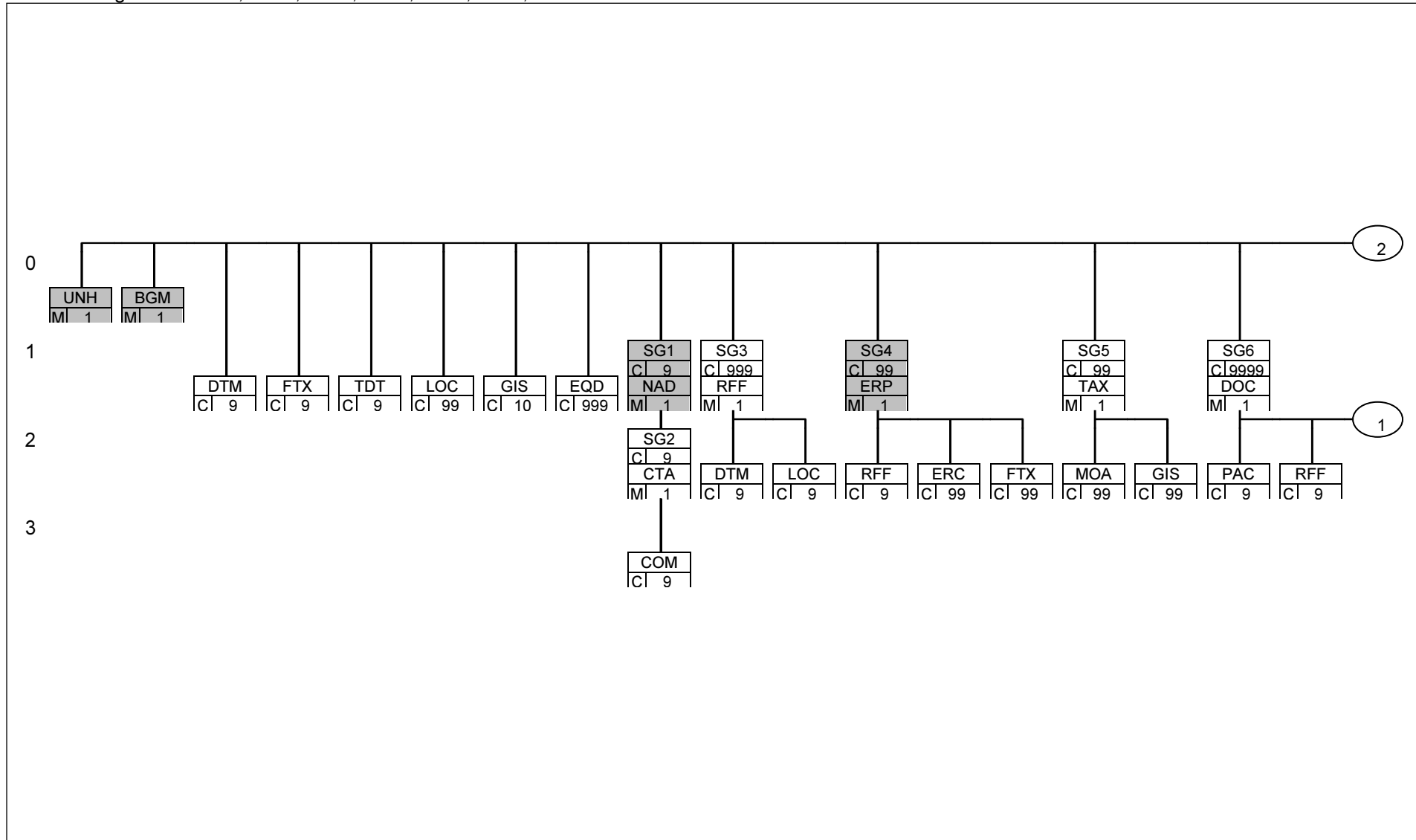
Valable pour les messages suivants:

CH801B	Refus technique annonce d'exportation
CH802B	Refus technique déclaration d'exportation
CH803B	Refus technique annonce de transit
CH804B	Refus technique demande AAR par le Da
CH805B	Refus technique annonce d'arrivée
CH806B	Refus technique remarques du déchargement
CH807B	Refus technique demande d'annulation

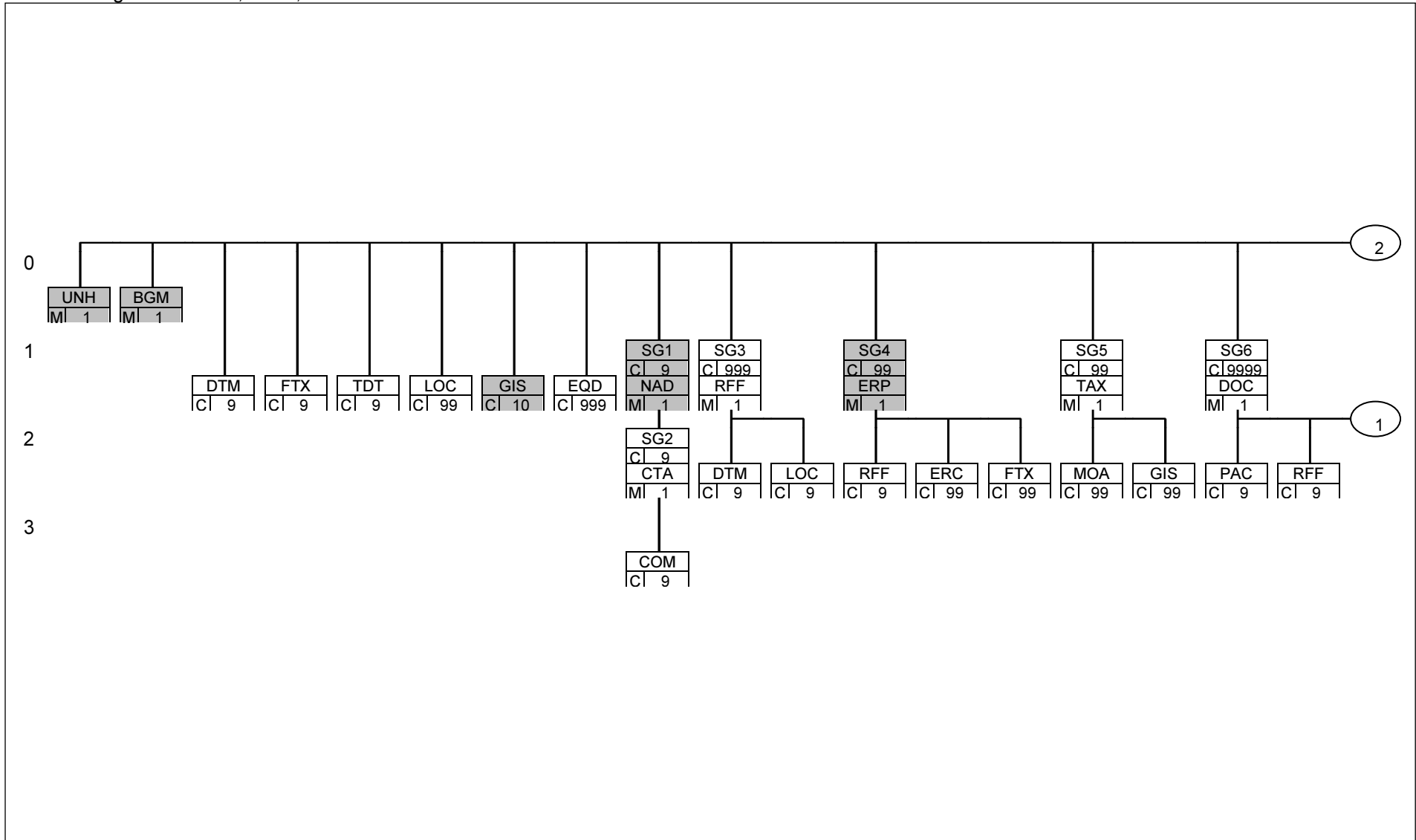
CH801C	Acceptation annonce d'exportation
CH802C	Acceptation déclaration d'exportation
CH803C	Acceptation annonce de transit
CH806C	Acceptation remarques du déchargement
CH807C	Décision d'annulation

## 2.1 Page 1

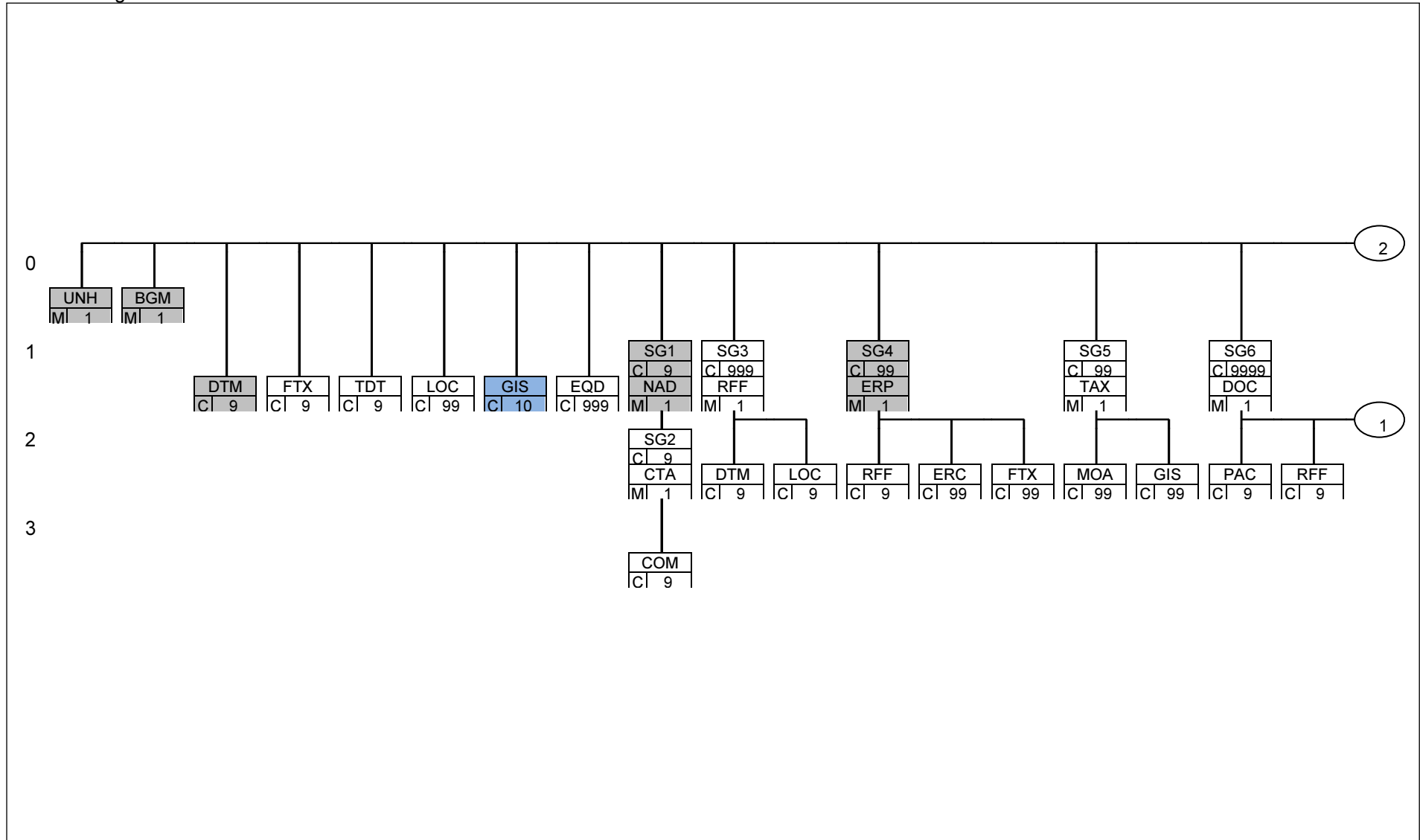
### 2.1.1 Page 1: CH801B, 802B, 803B, 804B, 805B, 806B, 807B



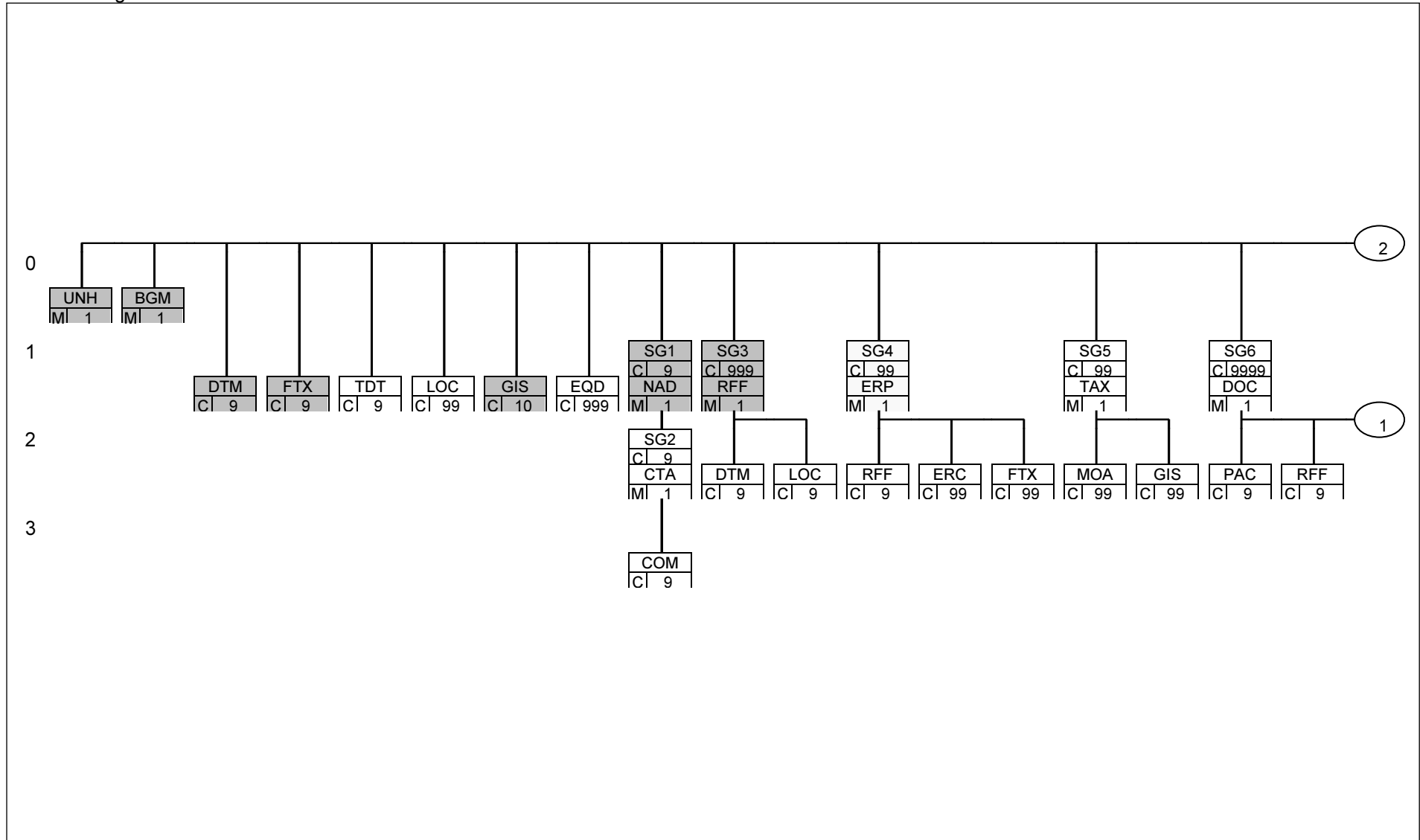
2.1.2 Page 1: CH801C, 802C, 806C



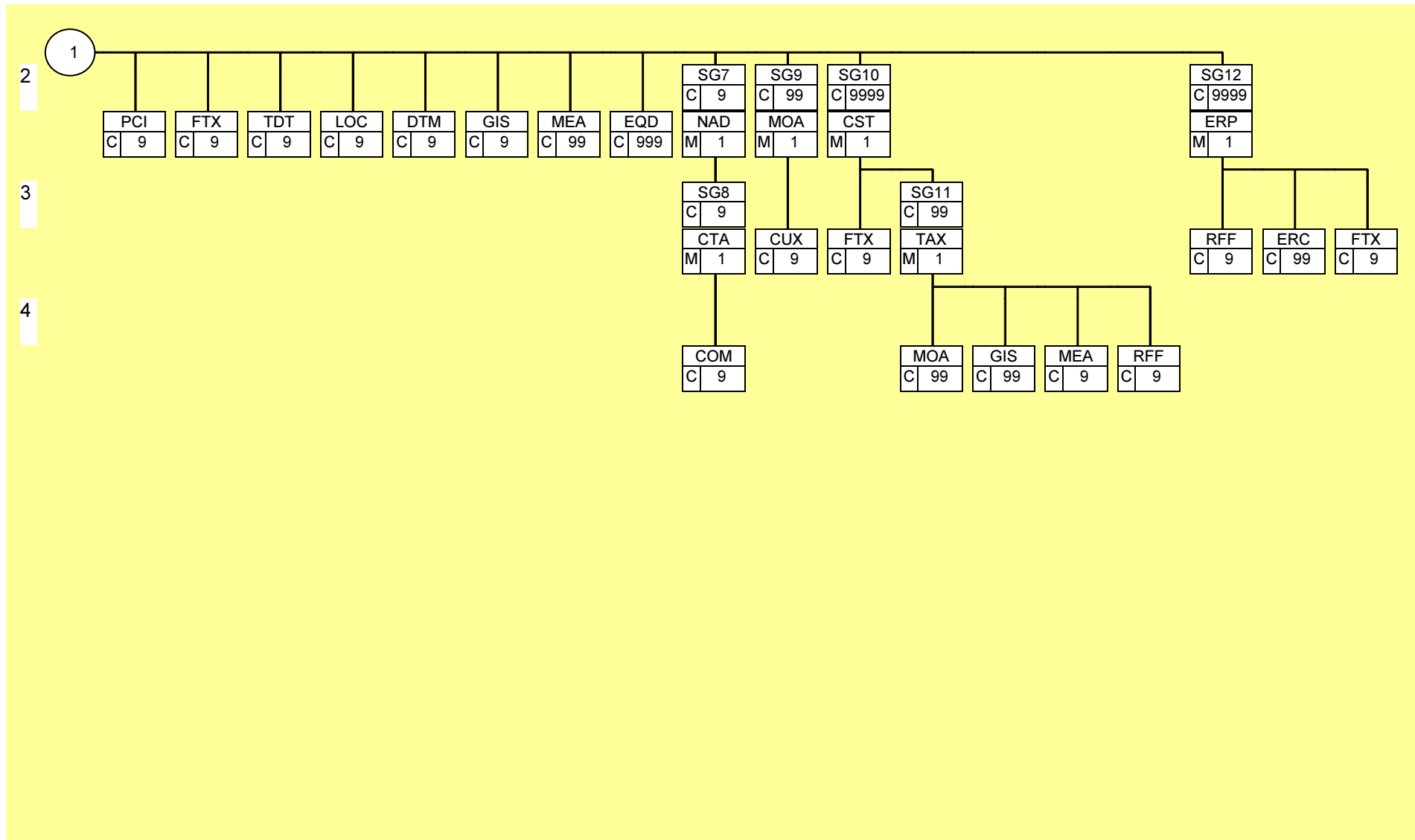
2.1.3 Page 1: CH803C



2.1.4 Page 1: CH807C

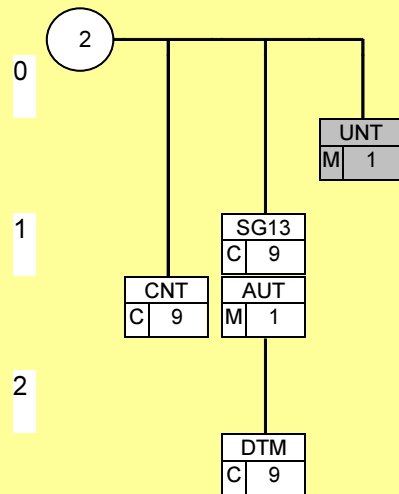


## 2.2 Page 2: pour tous les messages selon chiffre 8





## 2.3 Page 3: pour tous les messages selon chiffre 8



Document:	3-03 f Branching diagram InTV V10.5	Version:	10.5
Statut:	In Arbeit	Modifiée le:	27.11.2013
Distribution:	Internet AFD	Page 33 von 33	